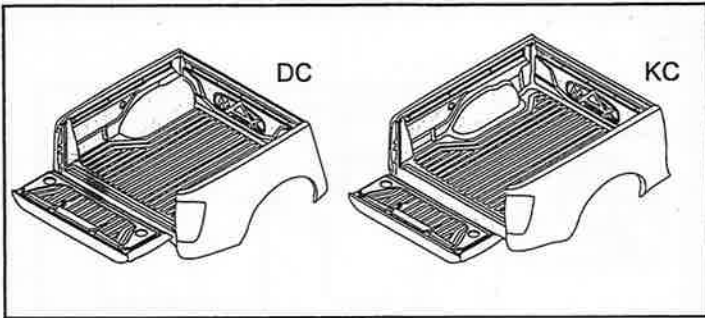




BEDLINER INSTALLATION INSTRUCTIONS



Caution for installation

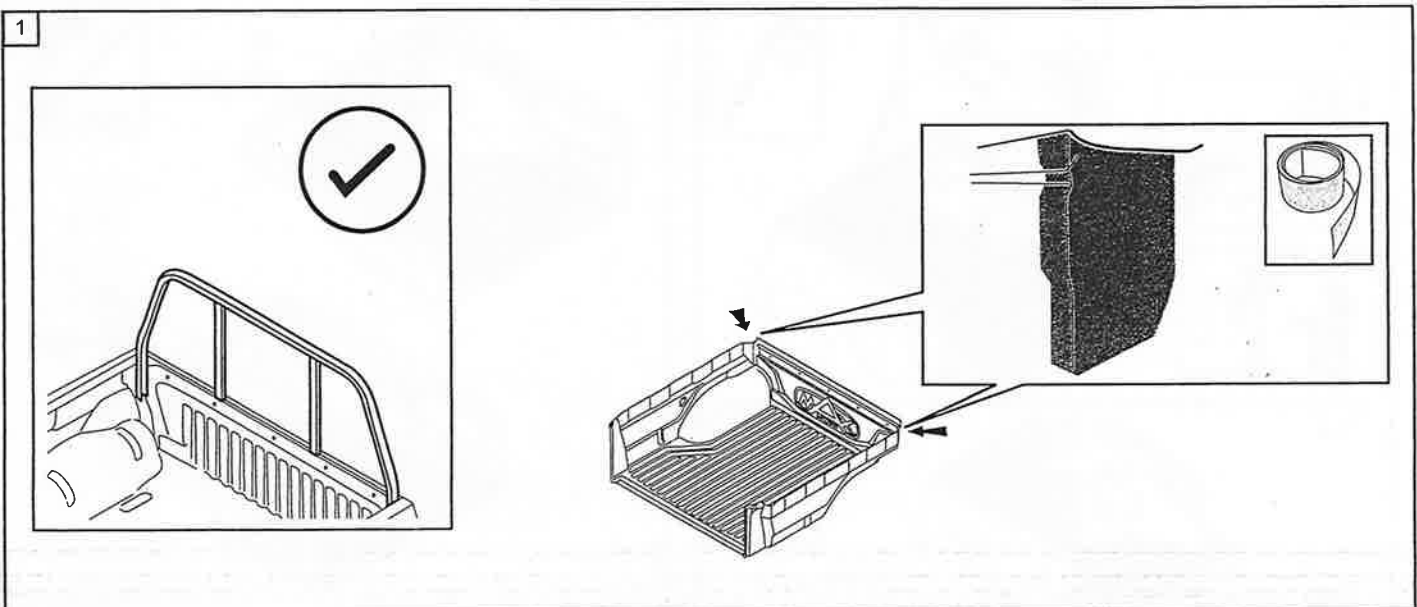
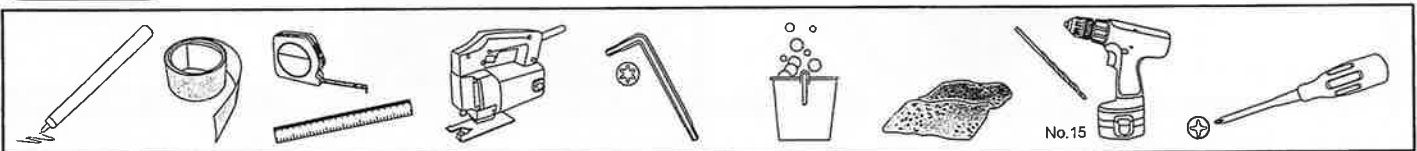
- Read this mounting manual carefully, before your start the installation.
1. Area where to install product should be clean.
 2. During installation, person who installed should take off any ornaments.

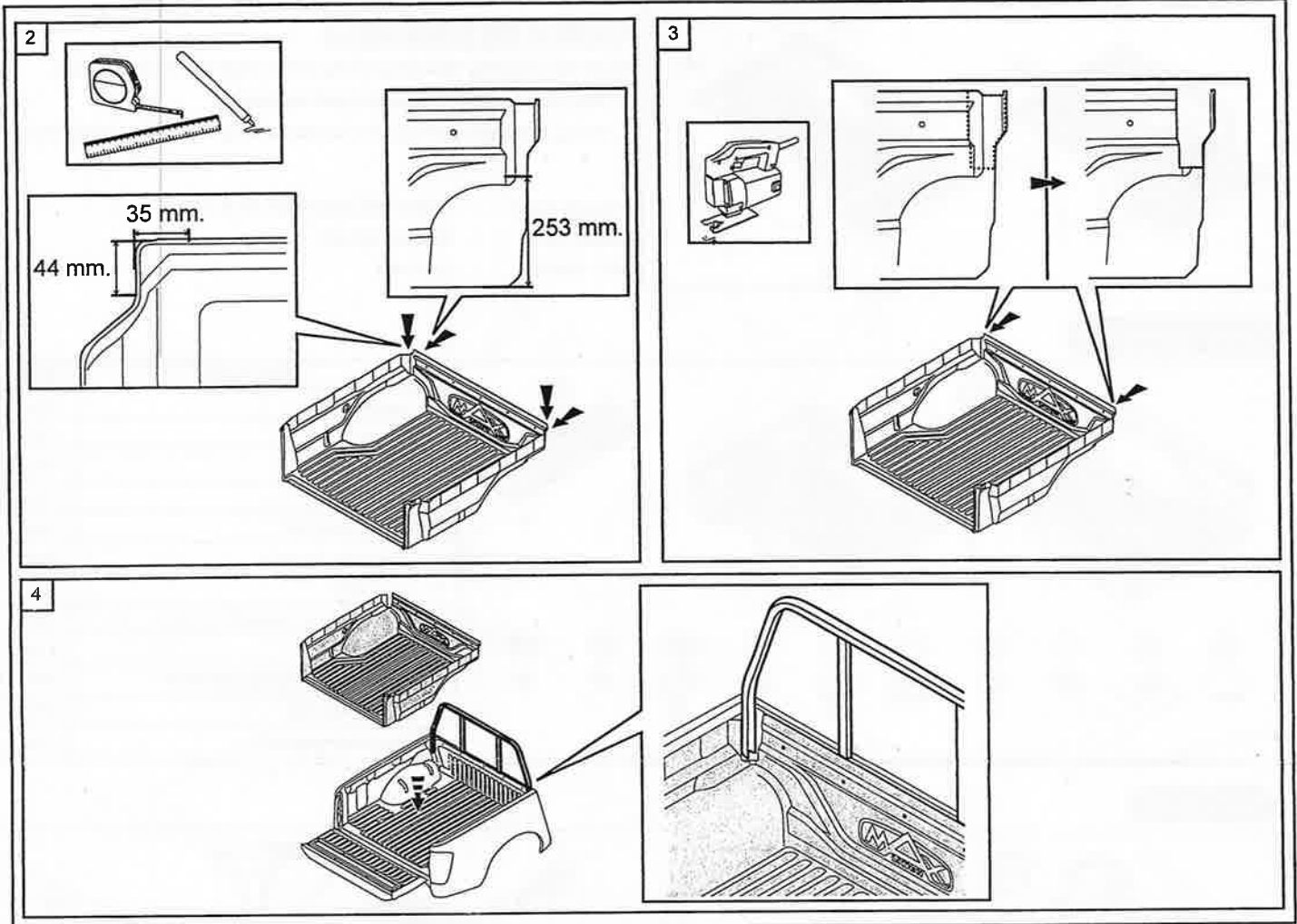
Product name : LINER U/R (NIX H60A 2015 U/R)
 Model name : NISSAN DC,KC
 Inst. number : L03-1461

Component parts

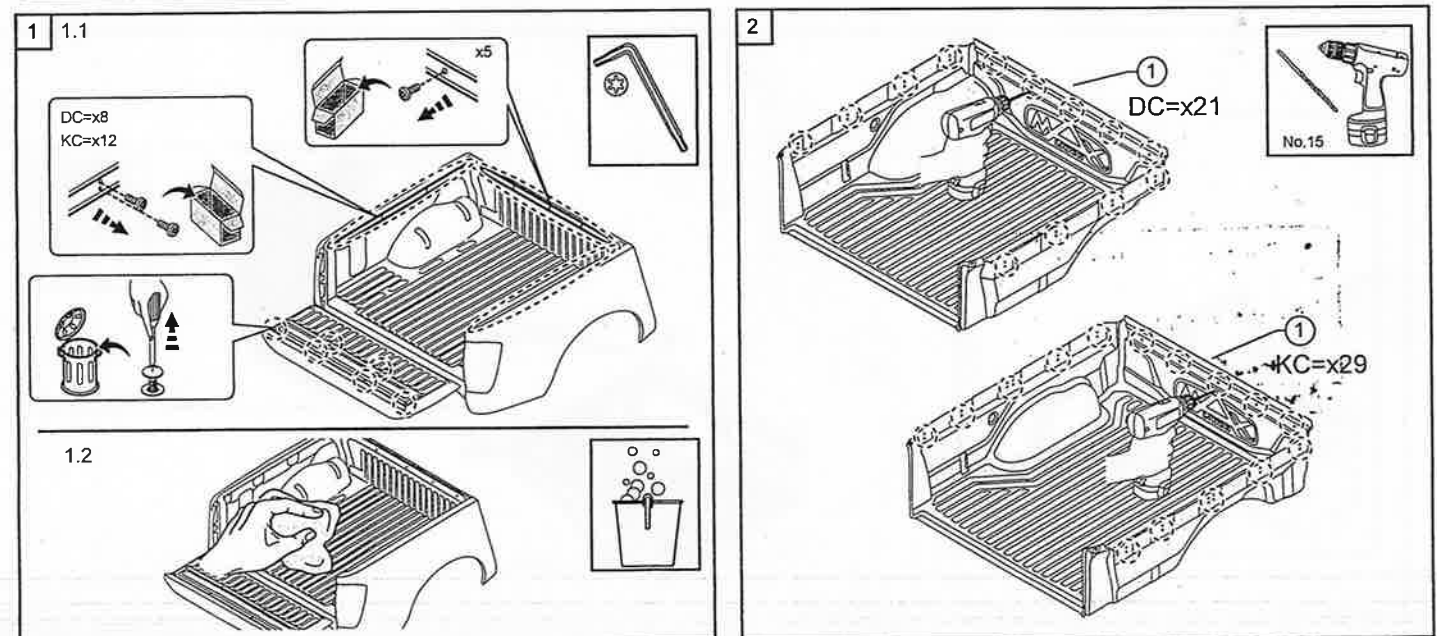
No.	Part name	Q'ty
1.	Bed liner	1 Pc.
2.	Tail gate	1 Pc.
3.	Cover rubber	1 Pc.
4.	Special nut M6	2 Pcs.
5.	Rubber washer D22	2 Pcs.
6.	Plain washer M6 OD24	2 Pcs.
7.	Cup washer	2 Pcs.
8.	Special truss head tapping screw M6x6L	2 Pcs.
9.	Plastic cap	2 Pcs.
10.	Truss cross head tapping screw M6x25	6 Pcs.
11.	Plain washer OD20	6 Pcs.
12.	Plain washer plastic 8/18	6 Pcs.

Tools used





Instruction procedure



Instruction procedure

