

WATER DEFENCE

ISUZU
D-MAX MK4&5

1ST EDITION

Double and
Extended Cabs

TRUCKMAN
FITTING INSTRUCTIONS

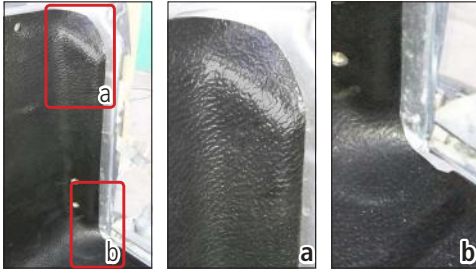


**Auto
Styling**
TRUCKMAN

www.autostylinguk.com

Please read these instructions carefully. If you have any questions regarding the fitting of this item call 0845 6444704 or email fitting@autostylinguk.com.

Failure to comply with these instructions may affect any warranty considerations



- 1** Remove the bed liner and trim as shown, for each side.

- 2** Remove both rear light clusters.



- 3** Temporarily fit the water defence kit with the 2 lower fixings.



- 4** Mark the upper fixing hole for each side on the vehicle body.

- 5** Remove the water defence kit & drill a 7mm hole on each side. Paint the edges with anti-rust paint.



- 6** Replace the liner & apply silicon sealant to the edges shown.



- 7** Lifting the centre of the liner at the tailgate, insert the water defence kits. Press against the silicon.

- 8** Refit the lower fixings.

- 9** Drill the liner for the upper fixing, as shown.



