

FIT 1089

TRUCKMAN
THE UK'S LARGEST HARDTOP MANUFACTURER

WATER DEFENCE KIT
FITTING INSTRUCTIONS



FORD RANGER MK5-6

ALL CABS

TRUCKMAN PART NUMBER: 8HMWDKFCFORA5DK

1ST EDITION

FORD RANGER MK5-6

Please read these instructions carefully. If you have any questions regarding the fitting of this item call 01384 485405 or email fitting@truckman.com.

Failure to comply with these instructions may affect any warranty considerations

KIT CONTENTS



1 x Set of mouldings (L & R)



4 x 6mm x 16mm Screws.

Tools Required:

- Pozi #3 Driver.
- Jigsaw/Hacksaw
- Trimming knife
- Pencil
- Measure.

1. Before fitting commences and, if possible, with the hardtop, tonneau cover or other accessory in place. Offer-up the units to the vehicle and check the clearance at the top.

(The water defence kit is designed to fit with most canopies but may be trimmed down to suit other products such as tonneaus)

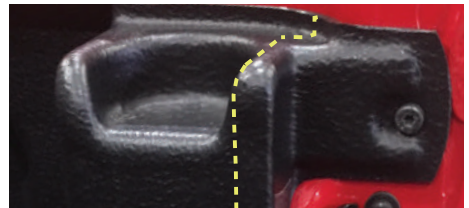
The plastic can be trimmed with a hacksaw or a jigsaw fitted with a fine blade.

Round off any sharp edges with a file before fitting. (Picture shown for example only)

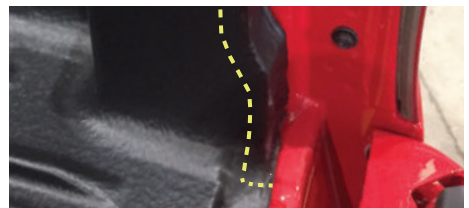


LINER

IF A PLASTIC BED LINER IS TO BE FITTED TO THE VEHICLE THIS WILL NEED TO BE TRIMMED AS IN THE ILLUSTRATIONS BELOW. THE LINER SHOULD BE MARKED OUT AND REMOVED BEFORE TRIMMING WITH A SHARP KNIFE OR A SAW (AIR SAW OR JIGSAW) ANY ROUGH EDGES OR BURRS SHOULD BE REMOVED.



2017 Ford OE bed liner pictured. Other liners may vary slightly in design.



2. With the liner removed, offer up the units to the vehicle as shown.

3. Insert the fixing screws through the mouldings then into the threaded holes in the vehicle body. *(Note: where the water defence kit and the liner share a fixing hole, omit the fixing until the liner is re-fitted)*



5. Re-fit the liner and tonneau or hardtop.



4. Tighten the screws.

