

FIT1115

# TRUCKMAN

THE UK'S LARGEST HARDTOP MANUFACTURER

## CLASSIC HARDTOP WATER DEFENCE KIT FITTING INSTRUCTIONS



**ISUZU D-MAX MK4-5**

**DOUBLE &  
EXTENDED CAB**

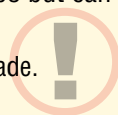
TRUCKMAN PART NUMBER: 8HMWDKFCISDM4D

Please read these instructions carefully. If you have any questions regarding the fitting of this item call 01384 485405 or email [fitting@truckman.com](mailto:fitting@truckman.com).

Failure to comply with these instructions may affect any warranty considerations

The water defense kit is designed to fit with Truckman Classic hardtops but can be trimmed down to fit with other products such as tonneaus.

The plastic can be trimmed with a hacksaw or a jigsaw fitted with a fine blade. Smooth off any sharp edges with a file before fitting.



1 x Set of mouldings  
(L & R)



4 x 6mm Washers.



2x 6mm x 20mm  
Screws.



2 x 6mm Locking  
Nuts.

**Tools Required:**

10mm Spanner/socket  
Drill/driver+ 6mm bit.  
Pencil  
(For liner)  
Jigsaw/Hacksaw  
Trimming knife +  
Silicone sealant.

The mouldings in this kit are designed to mount directly to the vehicle body. If a plastic liner is to be fitted, it must sit over the water defense kit and should be trimmed to allow this (see page 3).

1. Before fitting commences and, if possible, with the hardtop in place, offer-up the units to the vehicle and check the clearance at the top. Remove the hardtop and any liner before fitting the kit.

2. Locate and remove the rear light cluster retaining screws



3. Remove both O/S and N/S units.



4. With the liner and rear tie-downs removed, offer up the units to the vehicle. Fit the tie-down screws through the holes in the mouldings and into the threaded holes in the vehicle body.





5. Mark through the upper pre-drilled hole on to the vehicle body.

6. Drill 6mm holes, in the positions marked, through the vehicle body. Treat cut edges with rust inhibitor.



7. Insert the 6mm x 20mm screws, with a washer fitted, through the moulding from the inside of the load bed. Fit another washer and a locking nut inside the light recess. Tighten the nuts.

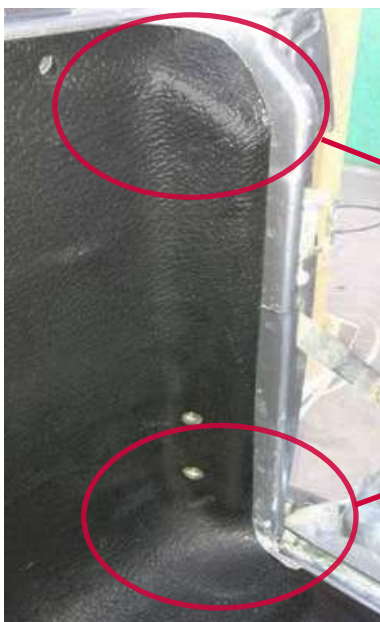
8. If a plastic load liner is to be fitted refer to the trimming guide below, otherwise the hardtop may now be fitted (or re-fitted).



If a liner is to be fitted to the vehicle this will need to be trimmed as in the illustrations below. The liner should be marked out and removed before trimming with a sharp knife or a saw (air saw or jigsaw) The photos below are shown as an example as the exact shape of plastic liners may vary dependin on the manufacturer.

9. Mark out the bedliner as shown in the photos. Trim with a knife or saw blade and de-burr any rough edges.

10. Remove the two lower fixings and the tie-down loop before test fitting the liner. Remove a little more of the liner if it is pressing against the Water Defence Kit.



## WATER DEFENCE KIT

**TRUCKMAN**

11. Re-fit the Liner and the lower fixings together with the tie-down loops (if presesnt).

12. Finally, run a bead of silicone sealant between the Water Defence Kit mouldings and the vehicle body.



### MODELS COVERED:

Truckman Classic Hardtop Water defence kit for:  
Nissan NP300 (2016-date) Double Cab.

These instructions are correct at time of publication only and may be amended without notice. For the latest version contact [fitting@truckman.com](mailto:fitting@truckman.com) or call us on 01384 485405

**Auto Styling**  
**TRUCKMAN**

**Auto Styling Tuckman Group Limited,**  
Unit 14 Narrowboat Way,  
Brierley Hill, DY2 0EZ, United Kingdom

**Tel:** 01384 485 405 **Fax:** 01384 485453

**Email:** [fitting@truckman.com](mailto:fitting@truckman.com)

**Web:** [www.truckman.com](http://www.truckman.com)

### Notice

It is important that safety warnings in the instructions are adhered to.

Do not attempt to fit this product if you are not competent to do so. Improper fitting may affect your warranty considerations.

Due to tolerances of the vehicle fitting of this product may differ from the exact fitting specifications described in the instructions. It is the responsibility of the fitter that the product is installed correctly.

Fitting instruction revisions may be found at [www.truckman.com](http://www.truckman.com)