

FIT 1091

**TRUCKMAN**  
THE UK'S LARGEST HARDTOP MANUFACTURER

WATER DEFENCE KIT  
FITTING INSTRUCTIONS



**MERCEDES X-CLASS**

TRUCKMAN PART NUMBER: 8HMWDKFMEXC1

1<sup>ST</sup> EDITION

## MERCEDES X-CLASS

Please read these instructions carefully. If you have any questions regarding the fitting of this item call 01384 485405 or email [fitting@truckman.com](mailto:fitting@truckman.com).

Failure to comply with these instructions may affect any warranty considerations

### KIT CONTENTS



1 x Set of mouldings  
(L & R)



8 x 6mm Washers.



4 x 6mm x 16mm  
Screws.



4 x 6mm Locking  
Nuts.

#### Tools Required:

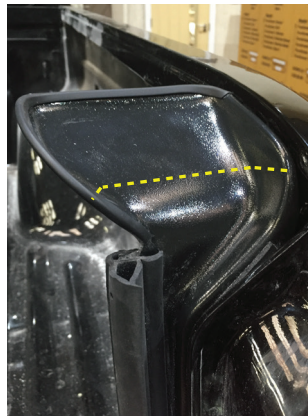
Pozi #2 Driver.  
10mm Spanner/socket  
Drill/driver+ 6mm bit.  
Jigsaw/Hacksaw  
Trimming knife  
Pencil  
Measure.

1. Before fitting commences and, if possible, with the hardtop tonneau cover or other accessory in place, offer-up the units to the vehicle and check the clearance of the cup at the top.

*(The water defence kit is designed to fit with most canopies but may be trimmed down to suit other products such as tonneaus)*

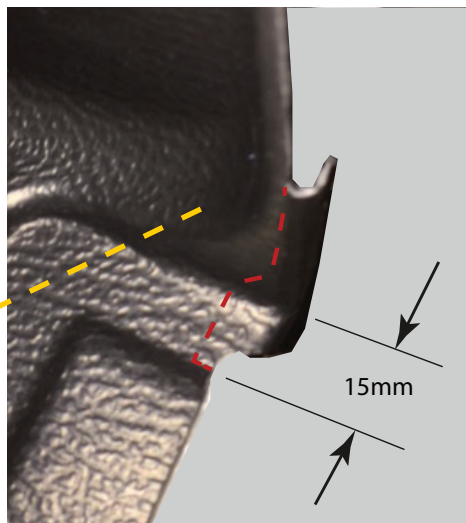
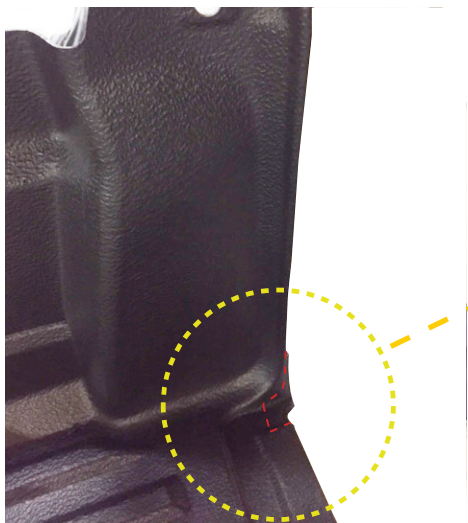
The plastic can be trimmed with a hacksaw or a jigsaw fitted with a fine blade. Round off any sharp edges with a file.

If a load bed liner is fitted, remove it before fitting the water defence kit.



### LINER

IF A LINER IS TO BE FITTED TO THE VEHICLE THIS MAY NEED TO BE TRIMMED AS IN THE ILLUSTRATIONS BELOW. THE LINER SHOULD BE MARKED OUT AND REMOVED BEFORE TRIMMING WITH A SHARP KNIFE OR A SAW (AIR SAW OR JIGSAW) ANY ROUGH EDGES OR BURRS SHOULD BE REMOVED.



2. Locate and remove the rear light cluster retaining nuts.



3. Remove both O/S and N/S units. Unplug the wires and set them aside.



4. Apply masking tape to the bodywork as shown.



5. With liner removed, offer up the units to the vehicle.

6. Mark through the pre-drilled holes on to the vehicle body.



7. Drill 6mm holes, in the positions marked, through the vehicle body.

8. Treat the raw edges of the holes in the vehicle body with rust inhibitor.

9. Insert the 6mm x 16mm screws, with a washer fitted, through the moulding from the inside of the load bed.

Fit another washer and a locking nut on to each one inside the light recess.



## WATER DEFENCE KIT

**TRUCKMAN**



10. Tighten the fittings to 4Nm.



11. Refit the rear light units and fit the retaining nuts.

### MODELS COVERED:

Truckman Water defence kit for:  
T Mercedes X-Class (2018-date) Double and cab.

These instructions are correct at time of publication only and may be amended without notice. For the latest version contact [fitting@truckman.com](mailto:fitting@truckman.com) or call us on 01384 485405

CONTACT

**Auto Styling**  
**TRUCKMAN**  
GROUP

**Auto Styling Truckman Group Limited,**  
Unit 14 Narrowboat Way,  
Brierley Hill, DY2 0EZ, United Kingdom

**Tel:** 01384 485 405 **Fax:** 01384 485453

**Email:** [fitting@truckman.com](mailto:fitting@truckman.com)

**Web:** [www.truckman.com](http://www.truckman.com)

### Notice

It is important that safety warnings in the instructions are adhered to.

Do not attempt to fit this product if you are not competent to do so. Improper fitting may affect your warranty considerations.

Due to tolerances of the vehicle fitting of this product may differ from the exact fitting specifications described in the instructions. It is the responsibility of the fitter that the product is installed correctly.

Fitting instruction revisions may be found at [www.truckman.com](http://www.truckman.com)