

FIT1014

**TRUCKMAN**

THE UK'S LARGEST HARDTOP MANUFACTURER

# LUXURY HARDTOP FITTING INSTRUCTIONS



VOLKSWAGEN AMAROK MK1 & 2

Please read these instructions carefully. If you have any questions regarding the fitting of this item call 01384 485 405 or email [fitting@autostylinguk.com](mailto:fitting@autostylinguk.com).

Failure to comply with these instructions may affect any warranty considerations



1 x Luxury Hardtop



1 x Protective Tape (Roll)



6 x Clamp Locks



1 x Set Scotch Locks



1 x Wiring harness kit



1 x Touch-up paint

**Also included:**  
Hardtop Keys

#### Tools Required:

17mm Spanner/socket  
4mm hex key  
10mm spanner(x2)  
Torque Wrench  
Trim clip tool  
Pliers  
Multimeter

#### Materials Required:

Silicone sealant

OVER RAIL BED LINERS can cause the hardtop to leak due to an uneven surface. Therefore, Auto Styling Truckman highly recommends converting to or replacing with an under rail bed liner.



1. Remove the cardboard packaging and set aside. Keep intact.



2. Carefully remove the protective wrapping. (On a 'Grand' canopy, open the side windows to release.)



3. Open the bulkhead window and retrieve the fitting kit.



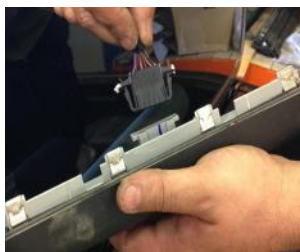
4. Remove the bolt caps from the clamps and completely unscrew each of them.



5. Thoroughly clean the vehicle's rear window.



6. Unclip the third brake light cluster.



7. Disconnect the wires.



8. Replace the light unit.

**Caution:** Auto electrics should only be carried out by a competent person. Vehicle wire colours are listed as a guide and may vary on some models.

**The function of each wire should be checked before any connections are made.**

Ensure the ignition is switched off and the battery -Ve terminal disconnected before connecting any wires. Ensure the harness is secured before using vehicle.



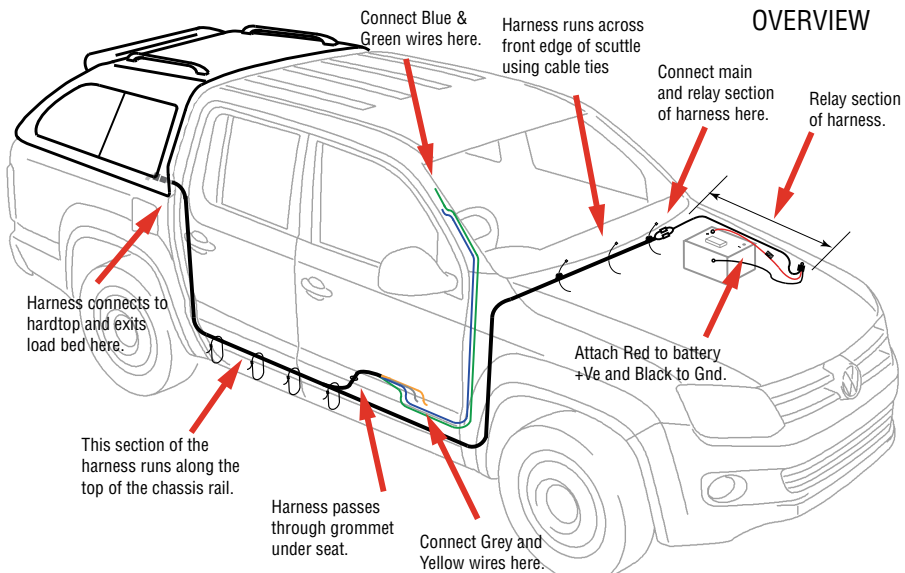
For hardtops with serial number M1056149 and above use electrics: SECTION 1.

For serial numbers M1056148 and below, go to SECTION 2 on page 6.

(the serial number is located on a decal attached to the front window)

For LHD vehicle electrics go to page 11

## OVERVIEW



1. Take the wiring harness from the fitting kit. Straighten it out noting the large grey plug at one end and the two smaller ones at the other. *Note: unplug the relay section if it is attached.*



2. Pass the small plugs through the round hole in the front corner of the load bed. Pull the harness through leaving approximately 100mm of the wires and the grey plug inside the load bed.



3. Run the harness down to the chassis and forward to below the driver's seat. Loosely attach with the large cable ties supplied.

Make a hole in this grommet located under the Driver's seat.

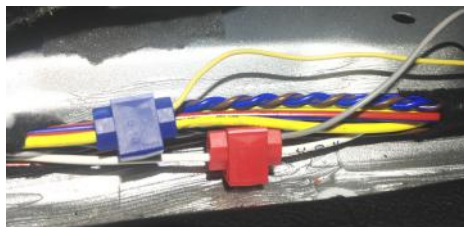
Feed the end of the harness containing the Yellow, Grey, Green and Blue wires through the hole and into the interior, under the driver's seat.



4. Un-clip the Driver's side sill cover and remove the front section of the door aperture seal. Unclip and remove the kick panel to the right of the accelerator pedal.



5. Under the driver's seat, draw the harness through the grommet then under the carpet to the door sill.



6. Remove a section of sheathing from the vehicle's wiring loom. Connect the remote locking wires using the table below as a guide. Check the function the function of each wire before connection.

## WIRE COLOUR GUIDE

HARDTOP	FUNCTION	VEHICLE	NOTES
<b>YELLOW</b>	Central Locking (Lock)	<b>YELLOW</b>	<i>These wires flash +12V using the remote.- You</i>
<b>GREY</b>	Central Locking (Unlock)	<b>WHITE</b>	<i>will need to close latch on driver's door to test</i>
<b>BLUE</b>	Brake Light	<b>BLACK/ RED</b>	<i>+12V when brake pedal is depressed.</i>
<b>GREEN</b>	Heated Screen	<b>WHITE</b>	<i>+12V when the heated screen is on.</i>





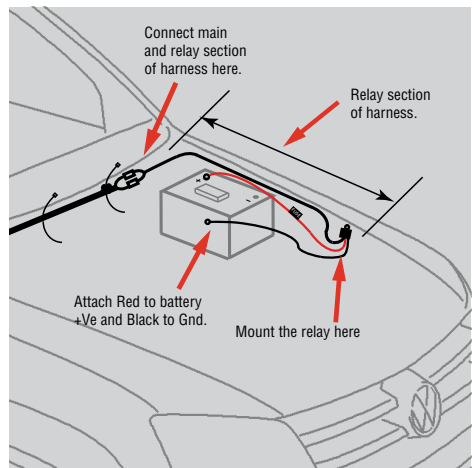
7. Remove the front section of rubber trim from door surround and the 'A' post cover. Feed the Green and Blue wires up to the 'A' post and connect to the brake light and heated screen wires using the table on the previous page as a guide for the wire colours. Test the wire functions before connection.



8. Take the leg of the harness which ends with the small plugs along the chassis and up into the engine bay (avoiding the exhaust and steering gear). Run the wires along the front edge of the scuttle panel using the existing screw-on cable ties. (Extra ones are supplied).

9. Connect the relay section of the harness to the main section. Run the wires around the engine bay securing it with the cable ties supplied. Remove the fuse from the holder then attach the Red wire to the battery terminal and the Black wire to a suitable body ground.

Note: Do not connect the black to the battery -ve terminal as it could bypass the battery condition monitoring system.

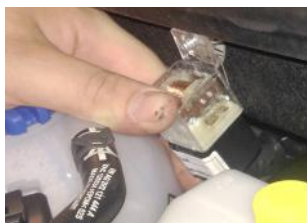


GO TO PAGE 8

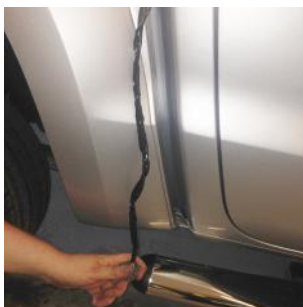
## Electrics Section 2 for hardtops with serial numbers below M1056148



1. Locate the wiring harness from the fitting kit then, in the engine bay, pass the grey plug down to the chassis in the position indicated by the white arrow.
2. Feed the plug back along the chassis so that it is level with the back of the cab. The shorter 'leg' of the harness will now be under the vehicle.
3. Run the longer 'leg' of the harness containing the relay and fuse around the engine bay as shown but do not connect to the battery at this stage.



4. Attach the relay to one of the scuttle fittings.



5. Pass the canopy wiring harness down between the cab and the load bed.

6. Now connect the two parts of the harness together under the vehicle.



7. Make a hole in this grommet located below the driver's seat.



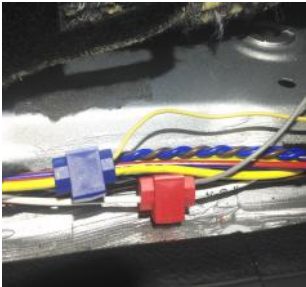
8. Carefully unclip the sill trim from the driver's door.



9. Feed the Short 'leg' of the harness through into the cab.



10. Draw it through under the drivers seat and under the carpet to the driver's sill.



11. Ensure the ignition is switched off. In the driver's sill, remove a portion of the insulation from the vehicles wiring loom and make the connections as shown in the table below.

WIRE COLOUR GUIDE

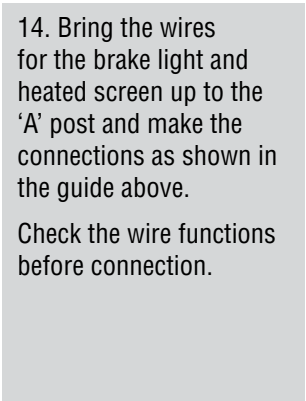
HARDTOP	FUNCTION	VEHICLE	NOTES
YELLOW	Central Locking (Lock)	YELLOW	<i>These wires flash +12V using the remote.- You will need to close latch on driver's door to test</i>
GREY	Central Locking (Unlock)	WHITE	
BROWN	Not used	NOT USED	Not used
BLUE	Brake Light	BLACK/ RED	+12V when brake pedal is depressed.
GREEN	Heated Screen	WHITE	+12V when the heated screen is on.



12. Remove the front section of the rubber door seal.



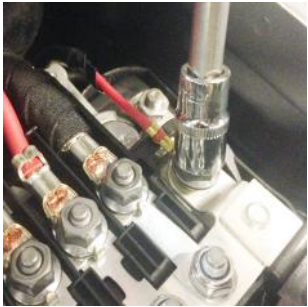
13. -and the drivers side 'A' post cover.



14. Bring the wires for the brake light and heated screen up to the 'A' post and make the connections as shown in the guide above.  
  
Check the wire functions before connection.



15. Remove the fuse from the holder then connect the red wire to battery +ve and black to battery -ve.

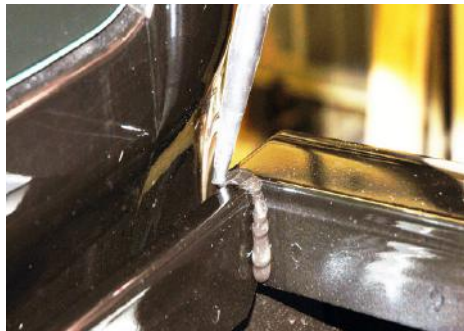


GO TO NEXT PAGE





1. Wipe down the top surface of the bed rails.



2. Fill the join between the front and side rails with silicone.

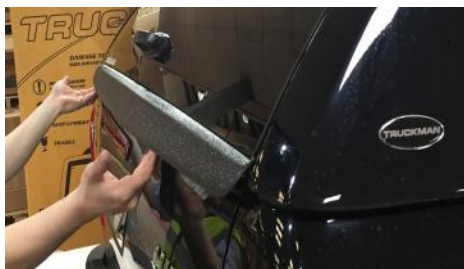


#### HEAVY LIFTING

We recommend the use of 4 people to lift the hard top.



3. With the tailgate closed, lift the canopy on to the bed of the vehicle.



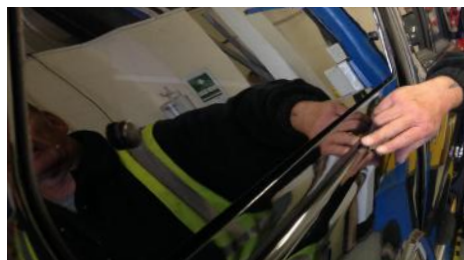
5. Carefully adjust the position of the canopy so that the seal under the rear door is just in contact with the tailgate.



6. Check that the canopy and vehicle bed line up at the front and the canopy does not overhang.



7. Centralise the bottom of the rear door to the tailgate.



8. Then centralise the canopy at the front end.





9. Assemble the clamps loosely in position on the side rails. Using scissors, cut away the rubber trim in the desired positions.



10. Tighten the clamps to 6-8Nm (start with the rear ones).



11. Ensure the rear door fully latches when closed firmly (the seal under the door should now be half compressed).



12. Small adjustments can be made, if required, by re-positioning the striker plates.



13. Check the position again and repeat steps 5-11 if necessary. Replace the clamp bolt caps.



14. Connect the vehicle harness to the canopy.

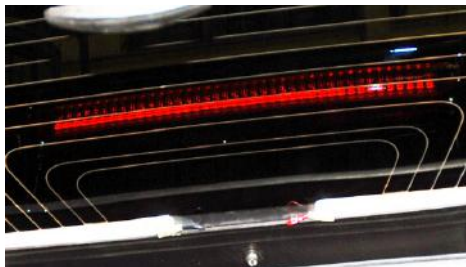


15. Replace the fuse then open the rear door. Ensure the switch is set to "Door" and that the interior light is on.

Close the door and check it switches off.



16. Switch on the vehicle's heated rear screen then use a test light to check for 12v across the element.



17. Check the operation of the canopy's brake light.



18. Remove the keys from the inner door handle, open the cover on the outer handle, insert the key and ensure the lock is rotated fully clockwise.



19. With all of the doors closed, check that the hardtop locks and unlocks with the vehicle's remote.

20. Re-wrap and cable tie all wiring away from moving parts or heat sources. Replace all of the trims and seals then repeat steps 15-19.

The installation of your **TRUCKMAN** Luxury hard top is complete.

## IMPORTANT INFORMATION



The Truckman Luxury hardtop is designed to work with the vehicle's central locking and should be operated using the vehicle's key fob. If keys are used to open the rear door, the lock must be returned to the fully-clockwise position in order for the remote locking to operate.

PLEASE LEAVE THESE INSTRUCTIONS FOR THE USER OF THE VEHICLE

---

---

---

---

---

---

---

---

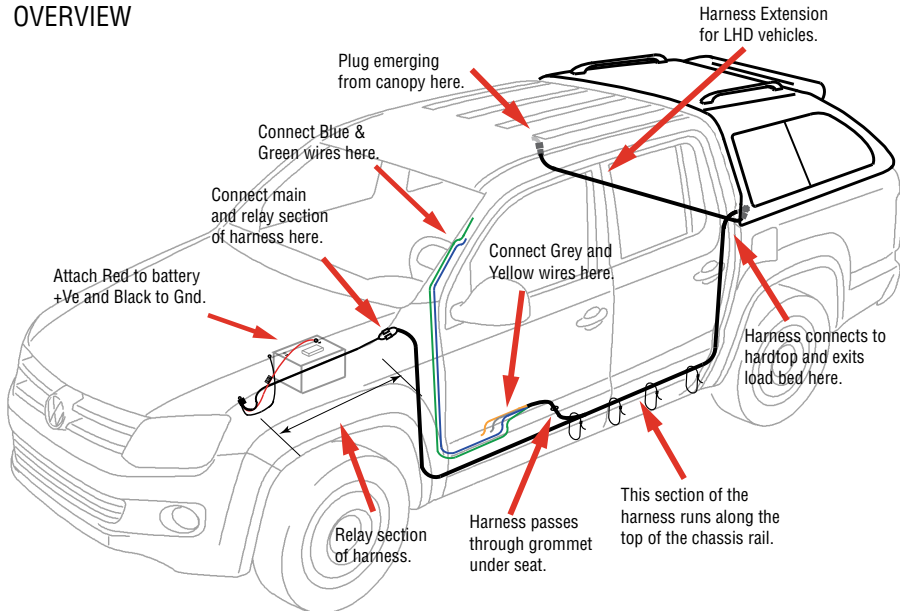
NEED ADVICE?

Contact us on 01384 485 405  
or [fitting@autostylinguk.com](mailto:fitting@autostylinguk.com)



Additional installation instructions for Left Hand Drive vehicles only.

OVERVIEW



**Additional parts Required:**

8HF2SWIREVWAMLHDEX:

Truckman Luxury Vehicle Wiring Harness Extension for LHD VW Amarok

1. Fit the wiring harness on the driver's (Left) side of the vehicle using the instructions in 'Electrics section 1' and the diagram above as a guide. Secure any excess wiring in the engine compartment with the cable ties supplied.



2. Inside the loadbed, Connect the wiring harness extension into the main harness in the front/left corner of the load bed then run it across to the right side.

Use the self adhesive pads and cable ties to secure it in place (it may be tucked behind the load liner if one is fitted)

Continue to follow the instructions from the top of page 8.

## IMPORTANT INFORMATION



The Truckman Luxury hardtop is designed to work with the vehicle's central locking and should be operated using the vehicle's key fob. If the keys are used to open the rear door, the lock must be returned to the fully-clockwise position in order for the remote locking to operate.

## PLEASE LEAVE THESE INSTRUCTIONS FOR THE USER OF THE VEHICLE

### MODELS COVERED:

Truckman Luxury tops (Grand, GLS, S, SR and L Series) for Volkswagen Amarok Double cab 2012-.

These instructions are correct at time of publication only and may be amended without notice. For the latest version contact [fitting@autostylinguk.com](mailto:fitting@autostylinguk.com) or call us on 01384 485405

### IMPORTANT NOTES

**Ensure** the tailgate and side windows (if applicable) are closed when driving.

**Do not** place animals in the load area without adequate ventilation.

**Do not** exceed load limit when using roof rails.

**Do not** use a pressure-washer near the seals.

### MAINTENANCE

Use a light oil to lubricate the lock and hinges.

Regularly check the tightness of the fixing clamps / bolts. *(6-8Nm Torque)*

### CLEANING

Use ordinary non-ammonia based car cleaning products and a soft or microfibre cloth.



**Auto Styling Truckman Group Limited,**  
Unit 14 Narrowboat Way,  
Dudley, DY2 0EZ, United Kingdom

**Tel:** 01384 485 405 **Fax:** 01384 485 453

**Email:** [fitting@autostylinguk.com](mailto:fitting@autostylinguk.com)

**Web:** [www.autostylinguk.com](http://www.autostylinguk.com)

### Notice

It is important that safety warnings in the instructions are adhered to.

Do not attempt to fit this product if you are not competent to do so. Improper fitting may affect your warranty considerations.

Due to tolerances of the vehicle fitting of this product may differ from the exact fitting specifications described in the instructions. It is the responsibility of the fitter that the product is installed correctly.

Fitting instruction revisions may be found at [www.autostylinguk.com](http://www.autostylinguk.com)