

FIT1108

# TRUCKMAN

THE UK'S LARGEST HARDTOP MANUFACTURER

## WATER DEFENCE KIT FITTING INSTRUCTIONS



**VOLKSWAGEN AMAROK** DOUBLE CAB

TRUCKMAN PART NUMBER: 8HMWDKFWAM2D

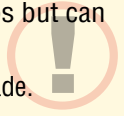
2<sup>ND</sup> EDITION

Please read these instructions carefully. If you have any questions regarding the fitting of this item call 01384 485405 or email fitting@truckman.com.

Failure to comply with these instructions may affect any warranty considerations

The water defense kit is designed to fit with Truckman Luxury hardtops but can be trimmed down to fit with other products such as tonneaus.

The plastic can be trimmed with a hacksaw or a jigsaw fitted with a fine blade. Smooth off any sharp edges with a file before fitting.



1 x Set of mouldings (L & R)



4 x Self tapping screws.

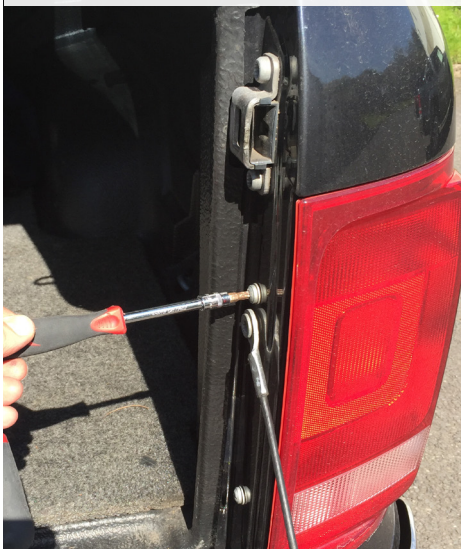
**Tools Required:**

- 10mm Spanner/socket
- Drill/driver+ 3mm bit.
- Pencil (For liner)
- Jigsaw/Hacksaw
- Trimming knife
- Silicone sealant.

The mouldings in this kit are designed to mount directly to the vehicle body. If a plastic liner is to be fitted, it must sit over the water defense kit and should be trimmed to allow this (see page 4).

1. Before fitting commences and, if possible, with the hardtop in place, offer-up the units to the vehicle and check the clearance at the top and trim the mouldings as necessary. Remove the hardtop and any liner before fitting the kit.

2. Locate and remove the rear light cluster retaining screws



3. Remove both O/S and N/S units.



4. With liner removed, offer up the units to the vehicle as shown.



5. Mark through the pre-drilled holes on to the vehicle body.



6. Drill 3mm holes, in the positions marked, through the vehicle body.

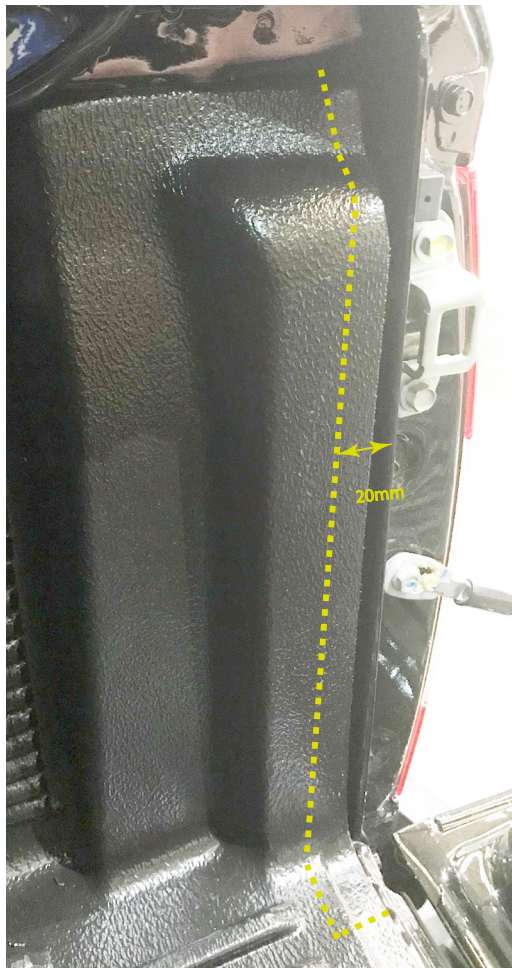
7. Insert the Self drilling/tapping screws through the moulding from the inside of the load bed.



8. Seal around the edges of the mouldings (where they meet the bodywork).

If a plastic load liner is to be fitted refer to the trimming guide on the next page, otherwise the hardtop may now be fitted (or re-fitted).

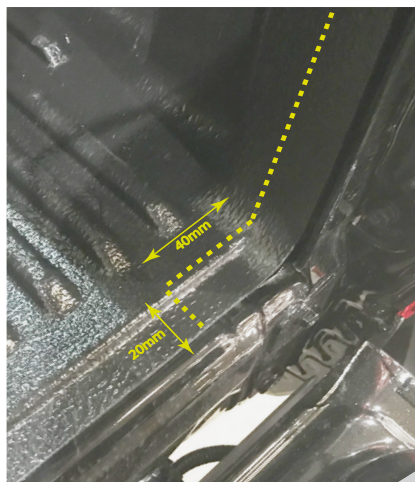




9. Plastic load liners may require trimming to allow space for the Water Defese Kit.

The example shown is for the Truckman Low-slip Under Rail liner. Other liners may vary slightly so check fit before trimming.

Most liners can be cut with a sharp trimming knife, air saw, Jig saw or hacksaw blade. Smooth off any sharp corners or edges before fitting.



#### MODELS COVERED:

Truckman Water defence kit for:  
VW Amarok Mk1&2 (2011-date) Double Cab.

These instructions are correct at time of publication only and may be amended without notice. For the latest version contact [fitting@truckman.com](mailto:fitting@truckman.com) or call us on 01384 485405

**Auto Styling**  
**TRUCKMAN**

**Auto Styling Tuckman Group Limited,**  
Unit 14 Narrowboat Way,  
Brierley Hill, DY2 0EZ, United Kingdom

**Tel:** 01384 485 405 **Fax:** 01384 485453

**Email:** [fitting@truckman.com](mailto:fitting@truckman.com)

**Web:** [www.truckman.com](http://www.truckman.com)

#### Notice

It is important that safety warnings in the instructions are adhered to.

Do not attempt to fit this product if you are not competent to do so. Improper fitting may affect your warranty considerations.

Due to tolerances of the vehicle fitting of this product may differ from the exact fitting specifications described in the instructions. It is the responsibility of the fitter that the product is installed correctly.

Fitting instruction revisions may be found at [www.truckman.com](http://www.truckman.com)