

FIT1034

TRUCKMAN

THE UK'S LARGEST HARDTOP MANUFACTURER

CLASSIC TOP FITTING INSTRUCTIONS



FORD RANGER MK5 & 6

ALL
CABS

2ND EDITION REVISION 3

Please read these instructions carefully. If you have any questions regarding the fitting of this item call 0845 6444704 or email fitting@autostylinguk.com.

Failure to comply with these instructions may affect any warranty considerations

KIT CONTENTS



1 x Classic Hardtop



1 x Protective Tape (Roll)



6 x M8 Bolts



6 x Fixing Plates



6 x Large M8 Washers



6 x Nylock Nuts



1 x Blanking cover

Tools Required
 13mm Spanner
 13mm Socket
 PH2 Screwdriver
 T30 & T40 Screwdrivers
 Drill
 Drill Bits (3 & 9mm)
 Silicon Sealant
 Water spray
 Squeegee

Also includes:
 Hardtop Keys

PREPARATION



1. Gel Coat Top
 Remove the shrink wrap packaging, retrieving the kit contents before disposal.



2. Painted Top
 Remove the cardboard packaging and the kit contents carefully from the pallet.



3. Remove the bolts, washers, fixing plates & nuts from the kit.



4. Unscrew the ladder rack and lift off the bed.



5. Pull off the brake light cover and unscrew the light.



6. Unclip the connector in the back of the light.



7. (Mk5): Replace the disconnected brake light back on the vehicle. (Mk6): Fit the blanking cover supplied.

OVER RAIL BED LINERS can cause the hardtop to leak due to an uneven surface. Therefore, Auto Styling Truckman highly recommends converting to or replacing with an under rail bed liner.



8. Thoroughly clean the pickup's rear window and the hardtop's bulkhead window (if fitted) and top of the vehicle bed.

9. Apply silicone sealant to the bed's front corners to protect against water ingress.

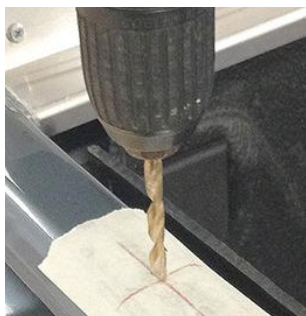
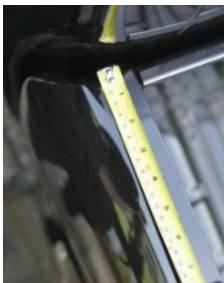
10. From the front of the load bed, measure and mark the side rails as follows:

Double Cab: 200mm, 750mm, 1300mm

Extra Cab: 200mm, 900mm, 1600mm

Single Cab: 200mm, 1100mm, 2000mm

Tip: Use masking tape & pencil. Continue the lines to the inside of the bed liner to aid alignment later. Mark a cross on top, 15mm from the inside.



NEED ADVICE?
Contact us on 01384 485405
or fitting@autostylinguk.com

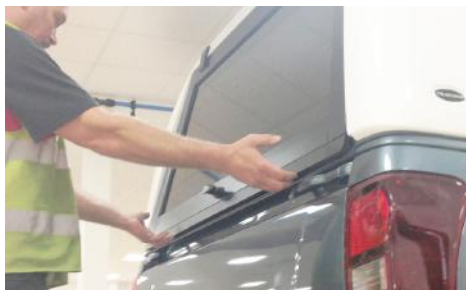
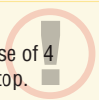


10. Lift the hardtop onto the bed

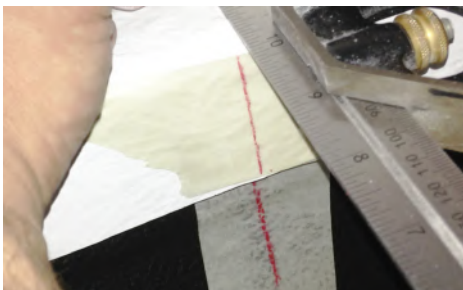
8. Drill a 3mm pilot hole 15mm from the inside edge at each mark. Drill again with an 9mm bit.

9. Remove all swarf and paint the holes with a zinc rich primer to prevent corrosion.

HEAVY LIFTING
We recommend the use of 4 people to lift the hardtop.



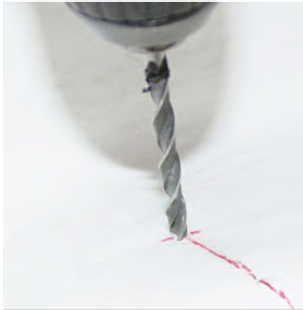
11. Align the top centrally and ensure that the seal under the hardtop door is just touching the tailgate.



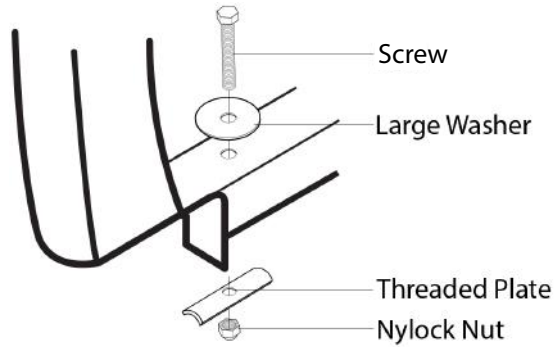
12. With the door closed, measure and mark the same dimensions as before onto the top (using Step 9's lines as a guide).

FITTING

13. Drill 3mm pilot holes to line up with the original holes. Re-check hardtop alignment.



14. Complete the holes with a 9mm drill bit.



15. Bolt the hardtop (without nylock nut) to the vehicle as shown in the diagram and tighten to 8Nm.

16. Add the nylock nut (also to 8Nm). Check the torque again after 30 mins.

TAILGATE PROTECTION



A strip of clear protection tape is supplied in the kit to prevent abrasion to the paint on the rear of the tailgate. It is cut to length for the Ford Ranger tailgate and must be positioned so that it protects the area of the tailgate where the rubber seal on the bottom of the hardtop door touches.



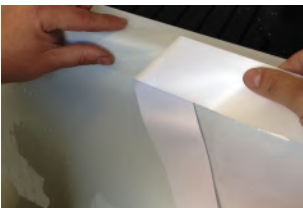
1. Thoroughly clean the top of vehicle's tailgate and apply a fine spray of water.



2. Use a blade to partly remove the backing film. Avoid touching the adhesive with your fingers.



3. Apply the tape approx. 2-3mm from the edge of the tailgate.



4. Peel the backing away whilst laying the tape in position.



5. Make any adjustments to the position then use a squeegee to remove the water and any air bubbles.



6. Dry the area whilst making sure the position of the tape is not disturbed.

MODELS COVERED:

Truckman Classic Hardtops for Ford Ranger Mk5 (2012-2016) Double cab and Super Cab.
 Truckman Classic Hardtops for Ford Ranger Mk6 (2016 -) Double cab and Super Cab.

These instructions are correct at time of publication only and may be amended without notice. For the latest version contact fitting@autostylinguk.com or call us on 01384 485405

IMPORTANT NOTES

Ensure the tailgate and side windows (if applicable) are closed when driving.

Do not place animals in the load area without adequate ventilation.

Do not exceed vehicle manufacturer's load limit when using roof rails.

Do not use a pressure-washer near the seals.

MAINTENANCE

AFTER THE INITIAL 300 MILES AND THEN EVERY 3000 MILES

Check the tightness of the fixing clamp bolts(*8Nm Torque*)

3 MONTHLY Use a light oil to lubricate the lock and hinges.

CLEANING

Use ordinary non-ammonia based car cleaning products and a soft or microfibre cloth.



STAINLESS STEEL STYLING

Add that extra style and protection to your Ford Ranger with stunning stainless steel accessories, such as this A-Bar.



Auto Styling UK Limited,
 Unit 4 Narrowboat Way,
 Brierley Hill, DY5 1UF, United Kingdom

Tel: 0845 6444704 Fax: 0845 6445014
 Email: fitting@autostylinguk.com
 Web: www.autostylinguk.com

Notice

It is important that safety warnings in the instructions are adhered to.

Do not attempt to fit this product if you are not competent to do so. Improper fitting may affect your warranty considerations. For your safety, we recommend that any wiring is performed by qualified Auto Electricians.

Due to tolerances of the vehicle fitting of this product may differ from the exact fitting specifications described in the instructions. It is the responsibility of the fitter that the product is installed correctly.