

Auto Styling **TRUCKMAN**

CLASSIC TOP

FITTING INSTRUCTIONS



MITSUBISHI L200 MK6-7 ALL CABS

Please read these instructions carefully. If you have any questions regarding the fitting of this item call 0845 6444704 or email fitting@autostylinguk.com.

Failure to comply with these instructions may affect any warranty considerations

KIT CONTENTS



1 x Classic Hardtop



1 x Protective Tape (Roll)



4 x M8 Bolts*



4 x Fixing Plates*

Tools Required

13mm Spanner
13mm Socket
Drill
Drill Bits (3 & 9mm)
Silicon Sealant



4 x Large M8 Washers*



4 x Nylock Nuts*

Also includes:
VHB Wipe
Hardtop Keys

* 6 for extra & single cab

PREPARATION



1. Gel Coat Top

Remove the shrink wrap packaging, retrieving the kit contents before disposal.



Painted Top

Remove the cardboard packaging and the kit contents carefully from the pallet.



2. Remove the bolts, washers, fixing plates & nuts from the kit.



3. Thoroughly clean the pickup's rear window and the hardtop's bulkhead window (if fitted) and the top of the vehicle bed.

OVER RAIL BED LINERS

can cause the hardtop to leak due to an uneven surface. Therefore, Auto Styling Truckman highly recommends converting to or replacing with an under rail bed liner.



FITTING

4. From the inside of the load bed, measure and mark the side rails as follows:

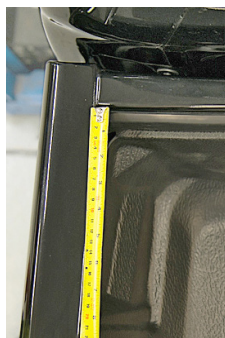
Double Cab: 200mm, 1080mm

Long Bed: 240mm, 1300mm

Extra Cab: 250mm, 800mm, 1400mm

Single Cab: 200mm, 1000mm, 1900mm

Tip: Use masking tape & pencil. Continue the lines to the inside of the bed liner to aid alignment later. Mark a cross on top, 15mm from the inside.

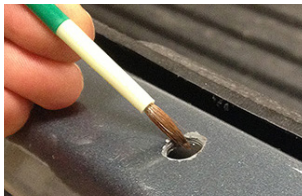
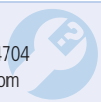




5. Drill a 3mm pilot hole 15mm from the inside edge at each mark. Drill again with an 9mm bit.

NEED ADVICE?

Contact us on 0845 644 4704
or fitting@autostylinguk.com



6. Remove all swarf and paint the holes with a zinc rich primer to prevent corrosion.



7. Apply silicon to the front corners just prior to fitment (except on single cab).



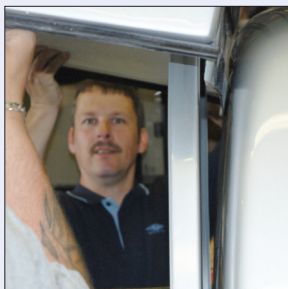
8. Lift the hardtop onto the bed

HEAVY LIFTING

We recommend the use of 4 people to lift the hardtop.



SINGLE CAB ONLY

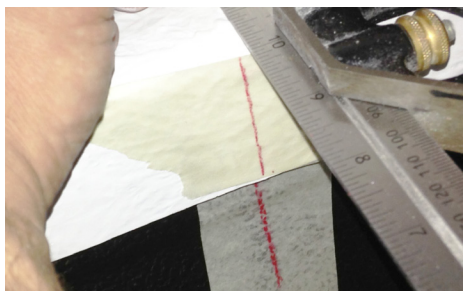


a. Lift the top over the ladder-rack onto the bed. Keep the rear end slightly raised until the hardtop is in position.

b. Insert padded wedges between the top and the cab to hold the top as far back as possible (without forcing).

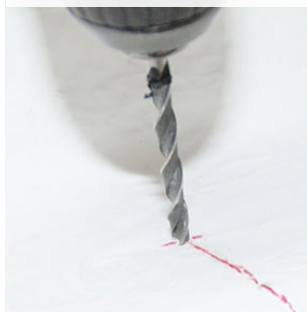


9. Align the top centrally and ensure that the seal under the hardtop door is just touching the tailgate.

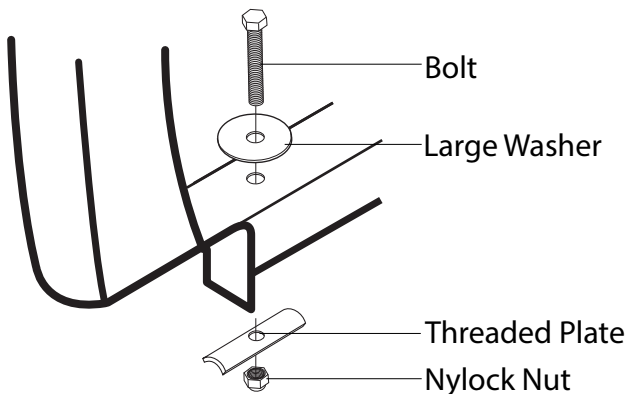


10. With the door closed, measure and mark the same dimensions as before onto the top (using Step 9's lines as a guide).

11. Drill 3mm pilot holes to line up with the original holes. Re-check hardtop alignment.



12. Complete the holes with a 9mm drill bit.

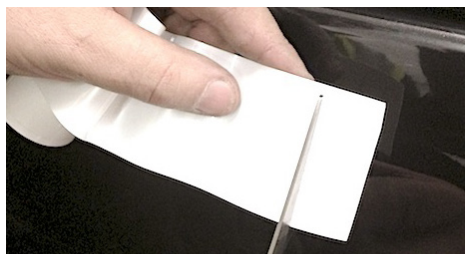


13. Bolt the hardtop (without nylock nut) to the vehicle as shown in the diagram and tighten to 8Nm.

14. Add the nylock nut (also to 8Nm).



15. Thoroughly clean the top of vehicle's tailgate.



16. Unroll the protective tape and cut one end square.



17. Partly remove the backing from the tape.



18. Carefully apply it to the tailgate where the door touches, rubbing outwards to remove any bubbles as you go.

NEED ADVICE?

Contact us on 0845 644 4704
or fitting@autostylinguk.com



19. Trim the tape square at the other end.

IMPORTANT NOTES

Bed liners **must** be under rail for a good fit.
Ensure the tailgate and side windows (if applicable) are closed when driving.
Do not place animals in the load area without adequate ventilation.
Do not exceed load limit when using roof rails.
Do not use a pressure washer near the seals.

MAINTENANCE

Use a light oil to lubricate the lock and hinges.
Check the tightness of the fixing clamps / bolts.
(8Nm Torque)

CLEANING

Use ordinary non-ammonia based car cleaning products and a soft or microfibre cloth.

NEED ADVICE?

Contact us on 0845 644 4704
or fitting@autostylinguk.com



NEED ADVICE?

Contact us on 0845 644 4704
or fitting@autostylinguk.com



NEED ADVICE?

Contact us on 0845 644 4704
or fitting@autostylinguk.com

**IMPORTANT NOTES**

Bed liners **must** be under rail for a good fit.
Ensure the tailgate and side windows (if applicable) are closed when driving.
Do not place animals in the load area without adequate ventilation.
Do not exceed load limit when using roof rails.
Do not use a pressure washer near the seals.

MAINTENANCE

Use a light oil to lubricate the lock and hinges.
Check the tightness of the fixing clamps / bolts.
(8Nm Torque)

CLEANING

Use ordinary non-ammonia based car cleaning products and a soft or microfibre cloth.

**STAINLESS STEEL STYLING**

Add that extra style and protection to your Mitsubishi L200 Mk6-7 with stunning stainless steel accessories, such as this A-Bar.

AutoStyling
TRUCKMAN

Auto Styling UK Limited,
Unit 4 Narrowboat Way,
Brierley Hill, DY5 1UF, United Kingdom

Tel: 0845 6444704 **Fax:** 0845 6445014

Email: fitting@autostylinguk.com

Web: www.autostylinguk.com

Notice

It is important that safety warnings in the instructions are adhered to.

Do not attempt to fit this product if you are not competent to do so. Improper fitting may affect your warranty considerations. For your safety, we recommend that any wiring is performed by qualified Auto Electricians.

Due to tolerances of the vehicle fitting of this product may differ from the exact fitting specifications described in the instructions. It is the responsibility of the fitter that the product is installed correctly.

Fitting instruction revisions may be found at www.autostylinguk.com