

CLASSIC TOP

FORD RANGER MK3-4
MAZDA BT-50 MK1

REVISION 2

TRUCKMAN
FITTING INSTRUCTIONS



**Auto
Styling**
TRUCKMAN

www.autostylinguk.com

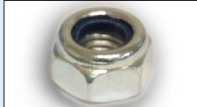
Please read these instructions carefully. If you have any questions regarding the fitting of this item call 0845 6444704 or email fitting@autostylinguk.com.

Failure to comply with these instructions may affect any warranty considerations

Kit Contents



Truckman Classic High Roof Hardtop



M8 Nylock Nuts

Double Cab	x 4
Extra Cab	x 6
Single Cab	x 6



Large M8 Washers

Double Cab	x 4
Extra Cab	x 6
Single Cab	x 6



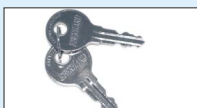
M8 Short Bolts

Double Cab	-
Extra Cab	x 2
Single Cab	-



Small M8 Washer

Double Cab	-
Extra Cab	x 2
Single Cab	-



Rear Door Keys

Double Cab	x 2
Extra Cab	x 2
Single Cab	x 2



M8 Long Bolts

Double Cab	x 4
Extra Cab	x 6
Single Cab	x 6



Fixing Plates

Double Cab	x 4
Extra Cab	x 6
Single Cab	x 6



Aluminium Extrusion

Double Cab	x 1
Extra Cab	-
Single Cab	-



Bulkhead Bracket

Double Cab	-
Extra Cab	x 1
Single Cab	-



Self-Tapping Screws

Double Cab	-
Extra Cab	x 6
Single Cab	-



Warranty Card

Double Cab	x 1
Extra Cab	x 1
Single Cab	x 1

Tools Required

13mm Spanner	Drill
13mm Socket	Drill Bits (8mm, 3mm)

TRUCKMAN

Hardtop Preparation

- 1 Gel Coat Top**
Remove the shrink wrap packaging, retrieving the fitting kit before disposal.



- Coloured Top**
Carefully remove the cardboard packaging. Remove the fitting kit from the pallet.



- 2** Remove the bolts, washers, fixing plates and nuts from the kit. Separate if joined.
- 3** Thoroughly clean the pickup's rear window and the hardtop's bulkhead window.



- !** Although, Auto Styling Truckman recommends replacing with or converting to an underrail bedliner (see website below), Truckman tops will fit with **overall bedliners**. However, they require the bedliner's front lip to be removed and holes to be made for the clamps. See below for instructions.



NEED ADVICE?

Call our experts on 0845 6444704 or email fitting@autostylinguk.com

Overall Bedliners

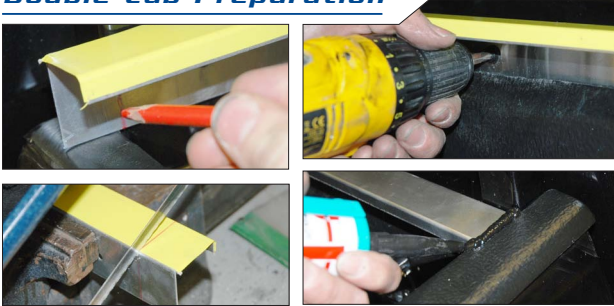


Remove the bedliner and cut the front lip off with a hand held jigsaw. Double & Single Cab Only.

Drill 57mm Ø holes, 55-60mm down on both sides of the bedliner measured to the dimensions on page 6. Clean up all edges and replace the top.

- !** For instructions on how to convert an overall bedliner to an underrail bedliner visit our website at: www.autostylinguk.com/info/fitting-instructions/

Double-Cab Preparation



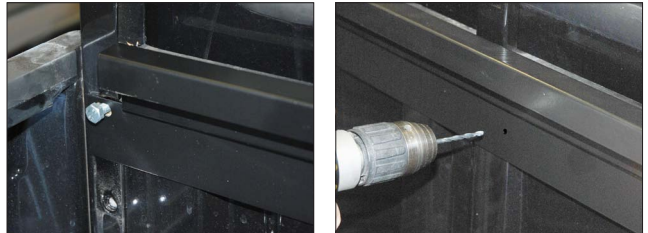
- 1 Lay the extrusion across the back of the bed and mark.
- 2 Cut the extrusion at this mark to fit between the rails.
- 3 Attach the extrusion to the backboard so that it is level with the side rails.
- 4 Fill any gaps with silicon to stop water.

Extra-Cab Preparation



- 1 Remove the bedliner and remove the area shown by the blue arrows to ensure all around clearance for the the bulkhead bracket. Ensure the area marked AA is left intact.

- 2 Loosely attach the Bulkhead Bracket with the short M8 Bolts.
- 3 Push it up against the loadbed and drill 3mm holes in the bed through the pre-drilled holes in the bracket
- 4 Remove the bracket and replace the bedliner. Drill 2 x 3mm holes near the top the bedliner, spread equally along it's width, through the liner and the bed. Screw the bedliner in place with the self-tapping screws.



Provides additional ventilation for the goods in your loadbed, suitable for the Classic. Can be purchased and fitted to the Classic after the original sale.

Pop-Up Roof Vent



Please read these instructions carefully. If you have any questions regarding the fitting of this item call 0845 6444704 or email fitting@autostylinguk.com.

Failure to comply with these instructions may affect any warranty considerations

Additional Fitting

- 1 Remove the roll of tape from the bag.



- 2 Cut one end of the tape square.

- 3 Partly remove the backing from the tape.

- 4 Carefully apply it to the tailgate, rubbing outwards to remove any bubbles as you go.



- 5 Trim the tape square at the other end.



NEED ADVICE?

Call our experts on 0845 6444704 or email fitting@autostylinguk.com



Auto Styling UK Limited,
 Unit 4 Narrowboat Way, Hurst Business Park, Brierley Hill, DY5 1UF, UK
 Tel: 0845 6444704 Fax: 0845 64445014
 Email: fitting@autostylinguk.com

www.autostylinguk.com

Notice

It is important that safety warnings in the instructions are adhered to. Do not attempt to fit this product if you are not competent to do so. Improper fitting may affect your warranty considerations. For your safety, we recommend that any wiring is performed by qualified Auto Electricians. Due to tolerances of the vehicle fitting of this product may differ from the exact fitting specifications described in the instructions. It is the responsibility of the fitter that the product is installed correctly. Fitting instruction revisions may be found at www.autostylinguk.com

Fitting

1 DOUBLE CAB OR SINGLE CAB

From the outside of the loadbed's headboard rail, measure towards the back and mark with a pencil on both side rails as follows:

Double Cab: 200mm, 1400mm

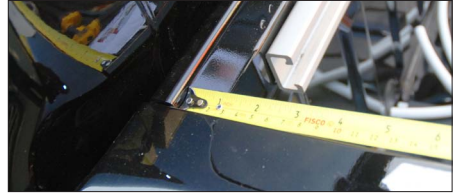
Single Cab: 200mm, 1150mm, 2100mm



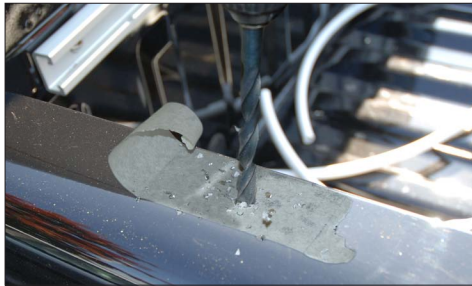
EXTRA CAB

From the inside of the loadbed's headboard rail, measure towards the back and mark with a pencil on both side rails as follows:

Extra Cab: 225mm, 830mm, 1490mm



2 Drill a 3mm pilot hole in the centre of the rail at each mark. Drill again with an 8mm drill bit.



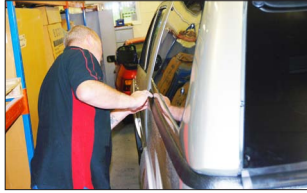
3 Remove all swarf and paint the holes with a zinc rich primer to prevent corrosion.

4 Lift the top onto the bed. This is best achieved with one person at the rear door end and two people guiding the front of the top. Keep the rear end slightly raised until the hardtop is in position. Pull the hardtop back as far as possible.

HEAVY LIFTING
At least 2 people required for lifting.

NOTE: Do NOT force downwards as this may cause cracking.

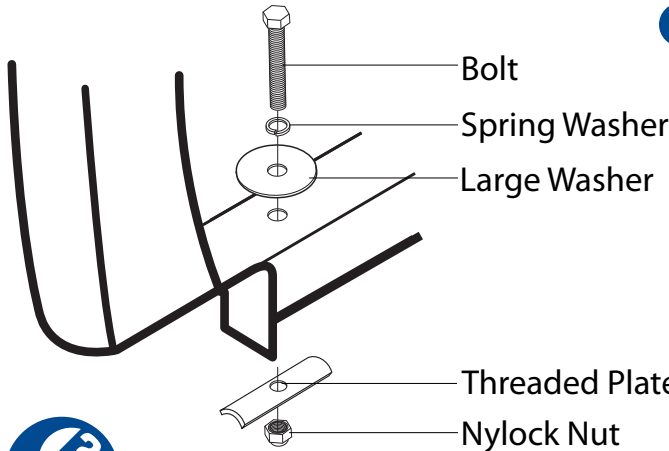
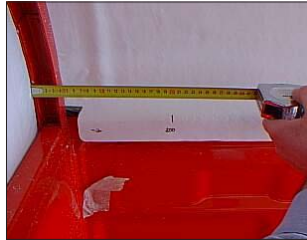
! The **EXTRA CAB** has a recessed bulkhead panel. Only the front lip goes over the ladder rack.



5 Insert wedges between the top and the cab to hold the top back. Align the top centrally on the bed.

6 Measure and mark the same dimensions as before, onto the top.

7 Drill 3mm pilot holes to line up with the original holes. Complete with the 8mm drill bit.



8 Bolt the hardtop to the vehicle as shown in the diagram. Tighten to approx. 10Nm.

Remember to add the nylock nut *AFTER* initial bolting (also to 10Nm)

Extra Cab:

Replace the bulkhead bracket and secure with the short M8 bolts, spring washers and small flat washers. Secure centre with self-tapping screws.



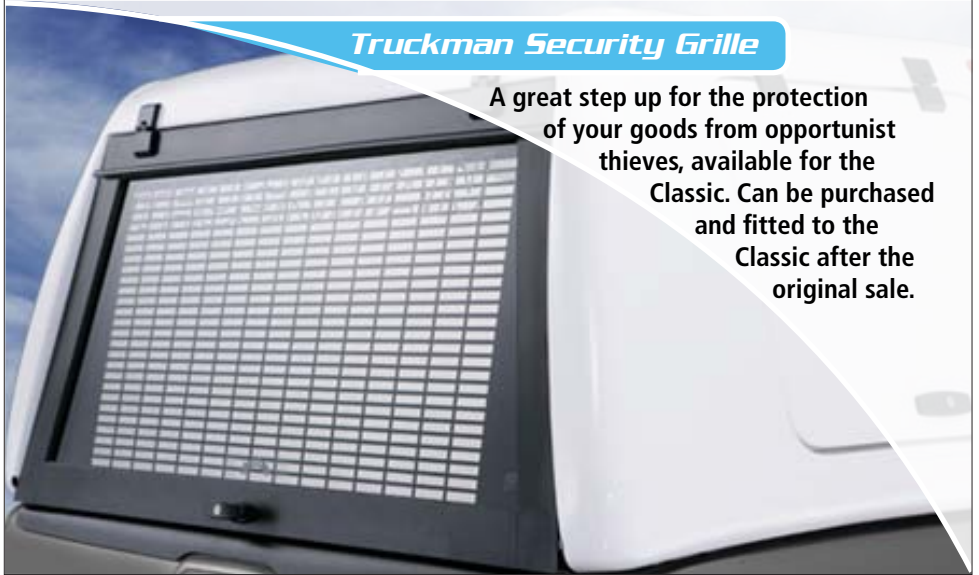
NEED ADVICE?

Call our experts on 0845 6444704 or email fitting@autostylinguk.com

TRUCKMAN
THE ORIGINAL

Truckman Security Grille

A great step up for the protection of your goods from opportunist thieves, available for the Classic. Can be purchased and fitted to the Classic after the original sale.



IMPORTANT NOTES

Bedliners **must** be underrail for a good fit.
Ensure the tailgate and side windows (if applicable) are closed when driving.
Do not place animals in the load area without adequate ventilation.
Do not exceed the load limit on the roof rails (*See sticker on the hardtop*)

MAINTENANCE

Use a light oil to lubricate the lock and hinges.
Check the tightness of the fixing clamps / bolts.
(Just more than hand tight / 10Nm Torque)

CLEANING

Use ordinary non-ammonia based car cleaning products and a soft or microfibre cloth.

Auto Styling

TRUCKMAN

Auto Styling UK Limited,

Unit 4 Narrowboat Way,
Hurst Business Park,
Brierley Hill,
DY5 1UF, UK

Tel: 0845 6444704

Fax: 0845 64445014

Email: fitting@autostylinguk.com

www.autostylinguk.com

Notice

It is important that safety warnings in the instructions are adhered to.
Do not attempt to fit this product if you are not competent to do so. Improper fitting may affect your warranty considerations. For your safety, we recommend that any wiring is performed by qualified Auto Electricians.

Due to tolerances of the vehicle fitting of this product may differ from the exact fitting specifications described in the instructions. It is the responsibility of the fitter that the product is installed correctly.

Fitting instruction revisions may be found at www.autostylinguk.com

