

FIT1037

TRUCKMAN

THE UK'S LARGEST HARDTOP MANUFACTURER

CLASSIC & UTILITY HARDTOP FITTING INSTRUCTIONS



TOYOTA HILUX MK8

DOUBLE &
EXTRA CAB

1ST EDITION REVISION 2

Please read these instructions carefully. If you have any questions regarding the fitting of this item call 0845 6444704 or email fitting@autostylinguk.com.

Failure to comply with these instructions may affect any warranty considerations

IMPORTANT INFORMATION



This hardtop is designed principally, for the 'Active' model of Hilux Mk8 which is supplied with an integrated ladder rack/cabin guard. It may also be fitted the 'Icon and Invincible' models, but the absence of the ladder rack will necessitate a larger space between the rear of the cab and the hardtop.

The functionality of the hardtop will be unaffected and the fitting method is the same except for the positioning method. The seal under the rear door of the hardtop should just be in contact with the vehicles tailgate before the clamps are applied.

KIT CONTENTS



1 x Classic or Utility Hardtop



1 x Protective Tape (Roll)



6 x Clamp Locks



6 x Self-Drilling Screws

Tools Required:

- 14mm Spanner.
- Torque Wrench
- Silicone sealant
- Water spray
- Squeegee
- Drill with 3 & 5 mm bits
- Hacksaw



1 x Steel Support Bracket

Also includes:
Hardtop Keys

PREPARATION



1. Gel Coat Top (D/C upright in a box and E/C flat on a pallet) Remove the packaging then unscrew the canopy from the timber supports. Locate the fitting kit and parts above.



2. Painted Top (boxed)
Remove the cardboard packaging and unscrew the canopy from the pallet and locate the kit.



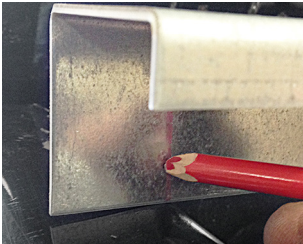
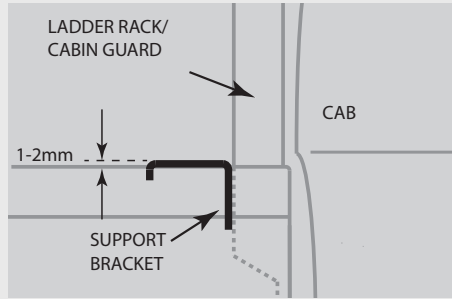
3. Locate the clamps in the kit and completely unscrew each of them.



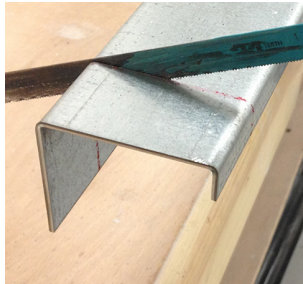
4. Thoroughly clean the pickup's rear window and the hardtop's bulkhead window (if fitted) and the top of the vehicle bed.

OVER RAIL BED LINERS can cause the hardtop to leak due to an uneven surface and will need to be altered in order to fit the clamps. Therefore, Truckman highly recommends converting to or replacing with an under rail bed liner.

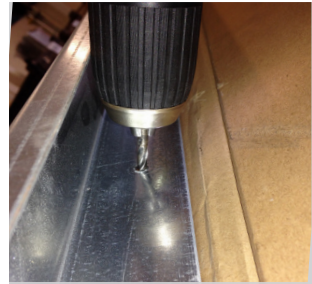
This Hardtop is designed to fit wholly behind the ladder rack (cabin guard). A steel bracket is supplied to fit behind the front rail of the vehicle's load bed in order to support the front of the hardtop. The bracket must be sealed along the front edge and ends in order to prevent water from entering the loadbed.



5. The bracket will need to be trimmed to length in order to fit between the rails, behind the ladder rack.



6. Mark and cut it off square with a hacksaw. Clean up the cut edge.



7. Mark and drill six 5mm holes to act a clearance holes for the fixings.



8. Position the bar on the front rail 1-2mm above the side rails. Drill 3mm pilot holes through the clearance holes.



9. Use the fixings supplied to attach the bracket to the vehicle. Apply silicone sealant along all joints to protect against water ingress.



10. Remove the load stops from the ladder rack/ cabin guard.

HEAVY LIFTING

We recommend the use of 4 people to lift the hard top.



1. Lift the canopy on to the bed of the vehicle taking care that the front of the canopy is placed on to the bulkhead bracket.



2. Position the front of the hardtop relative to the ladder rack, leaving a minimum clearance of 10mm.

FITTING



3. Carefully adjust the position of the canopy so that it lies centrally on the vehicle.



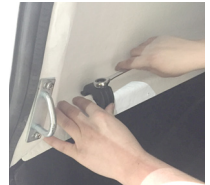
4. Check that the rear door is central relative to the lose vehicles tailgate.



5. Assemble the clamps, as shown, in the recesses of the side rails.



6. Tighten the clamps to approx 8Nm.



7. Re-check the position of the canopy and door. If necessary, slacken off the clamps, adjust the position and re-tighten them. Check the clamps again after 30 mins.

TAILGATE PROTECTION

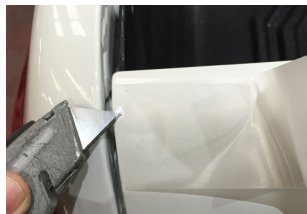
A strip of clear protection tape is supplied in the kit to prevent abrasion to the paint on the rear of the tailgate. It is cut to length for the Toyota Hilux tailgate and must be positioned so that it protects the area where the rubber seal on the bottom of the hardtop door touches.



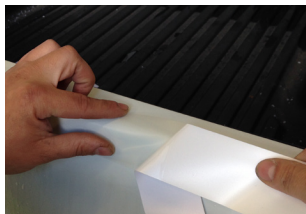
1. Thoroughly clean the top of vehicle's tailgate and apply a fine spray of water.



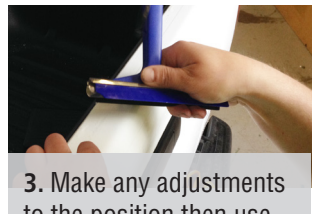
2. Use a blade to partly remove the backing film. Avoid touching the adhesive with your fingers.



1. Apply the tape approx. 2-3mm from the edge of the tailgate.




2. Peel the backing away whilst laying the tape in position.



3. Make any adjustments to the position then use a squeegee to remove the water and any air bubbles.

NEED ADVICE?
Contact us on 01384 485405
or fitting@autostylinguk.com



NOTES

NEED ADVICE?

Contact us on 01384 485408
or fitting@autostylinguk.com



INFORMATION

MODELS COVERED:

- Truckman Classic solid sided, high roof hardtop for Toyota Hilux Mk8 Double cab.
- Truckman Classic solid sided, high roof hardtop for Toyota Hilux Mk8 Extra cab.
- Truckman Utility high roof hardtop with side access doors, for Toyota Hilux Mk8 Double cab.
- Truckman Utility high roof hardtop with side access doors, for Toyota Hilux Mk8 Extra cab.

These instructions are correct at time of publication only and may be ammended without notice. For the latest version contact fitting@autostyling.com or call us on 01384 485405



CONTACT



Auto Styling UK Limited,
Unit 14 Narrowboat Way,
Dudley, DY2 0EZ United Kingdom

Tel: 01384 485405 Fax: 01384 485453
Email: fitting@autostylinguk.com
Web: www.autostylinguk.com

MAINTENANCE

Use a light oil to lubricate the lock and hinges.
Check the tightness of the fixing clamps / bolts.
(8Nm Torque)

CLEANING

Use ordinary non-ammonia based car cleaning products and a soft or microfibre cloth.

Notice

It is important that safety warnings in the instructions are adhered to.

Do not attempt to fit this product if you are not competent to do so. Improper fitting may affect your warranty considerations. For your safety, we recommend that any wiring is performed by qualified Auto Electricians.

Due to tolerances of the vehicle fitting of this product may differ from the exact fitting specifications described in the instructions. It is the responsibility of the fitter that the product is installed correctly.

Fitting instruction revisions may be found at www.autostylinguk.com