

AEROTOP RS

FORD
RANGER MK5

2nd EDITION

TRUCKMAN
FITTING INSTRUCTIONS



**Auto
Styling**
TRUCKMAN

www.autostylinguk.com

Please read these instructions carefully. If you have any questions regarding the fitting of this item call 0845 6444704 or email fitting@autostylinguk.com.

Failure to comply with these instructions may affect any warranty considerations

Kit Contents



1 x Truckman Hardtop



6 x Clamp Locks



1 x VHB Wipe



1 x Protective Tape (Roll)



2 x Scotch Locks

Tools Required

14 mm Wrench / Socket
(Use a Torque Wrench if possible)

Silicon Sealant & Pump
Drill & 11mm Drill Bit
Pair of Pliers

Also includes:
1 x Warranty Card
2 x Keys



Preparation

1 Coloured Top

Remove the nails and remove cardboard box. Remove the fitting kit from the pallet.



Gel Coat Top

Remove the shrink wrap packaging, retrieving the fitting kit before disposal.

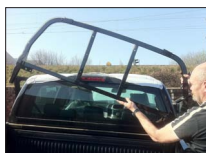


- 2 In the fitting kit, remove the clamp locks and completely unscrew each of them.
- 3 Thoroughly clean the rear window of the pickup and the hardtop's bulkhead window.
- 4 Check which side of the top the brake light wire exits. Remove the rear light cluster from the same side.



- 5 Drill a hole and treat with anti-rust paint. Put a grommet in the hole.

- 6 Unscrew the ladder rack and lift off the bed.
- 7 Pull off the brake light cover. And unscrew the light.
- 8 Unclip the connector in the back of the light
- 9 Replace the disconnected brake light back on the vehicle.



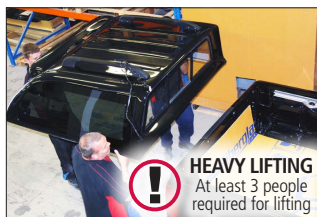
OVERRAIL BEDLINERS can cause the hardtop to leak due to an uneven surface. Therefore Auto Styling highly recommends converting to or replacing with an underrail bedliner. For instructions, visit our website at www.autostylinguk.com/info/fitting-instructions/



- 10 Wipe down the top of the vehicle bed.
- 11 Seal the front corners with silicon sealant. Use clear or black, depending on the vehicle colour.

Fitting

- 1 Lift the hardtop onto the vehicle bed.
- 2 Loosely fit the three clamps to the rail on both sides.



- 3 Align the top centrally on the bed. Ensure there is a good gap between the hardtop and the vehicle cab, and that the seal under the hardtop door is just touching the tailgate or bedliner.



IMPORTANT: Door and tailgate **MUST** be closed for step 4.

- 4 Tighten the clamps to 10Nm Torque using the 14mm wrench (Start with the middle clamps).
- 5 Recheck the hardtop alignment on the vehicle.



(Just more than hand tight / 8Nm Torque)



NEED ADVICE?

Call our experts on
0845 6444704
or email on
fitting@autostylinguk.co.uk

IMPORTANT NOTES

Bedliners **must** be underrail for a good fit.
Ensure the tailgate and side windows are closed when driving.

Do not place animals in the load area without adequate ventilation.

Do not exceed the load limit on the roof rails
(Normally 55kg evenly spread)

MAINTENANCE

Use a light oil to lubricate the lock and hinges.
Check the tightness of the fixing clamps / bolts.
(Just more than hand tight / 8Nm Torque)

CLEANING

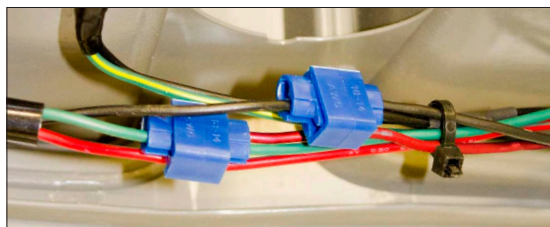
Use ordinary non-ammonia based car cleaning products and a soft or microfibre cloth.



- 5 Clean the top edge of tailgate using the VHB wipe supplied or a good quality bodywipe.
- 6 Remove the roll of tape from the bag and cut one end square.
- 7 Partly remove the backing from the tape and apply it to the tailgate, rubbing outwards to remove any bubbles as you go.
- 8 Cut the other end square.

Additional Brake Light Wiring

- 1 Pass the **RED & BLACK** wires into to light cluster through the grommet installed earlier.



- 2 Use scotch locks to attach the hardtop's brake light (the **RED** and **BLACK** wires) to the vehicle's brake light.

HARDTOP
RED
BLACK

VEHICLE
GREEN
BLACK

- 3 Test the brake light and replace the light cluster.

Auto Styling
TRUCKMAN

Auto Styling UK Limited,

Unit 4 Narrowboat Way, Hurst Business Park, Brierley Hill, DY5 1UF, UK

Tel: 0845 6444704 Fax: 0845 64445014

Email: fitting@autostylinguk.com

www.autostylinguk.com

Notice

It is important that safety warnings in the instructions are adhered to.

Do not attempt to fit this product if you are not competent to do so. Improper fitting may affect your warranty considerations. For your safety, we recommend that any wiring is performed by qualified Auto Electricians.

Due to tolerances of the vehicle fitting of this product may differ from the exact fitting specifications described in the instructions. It is the responsibility of the fitter that the product is installed correctly.

Fitting instruction revisions may be found at www.autostylinguk.com