

FIT 1026

TRUCKMAN
THE UK'S LARGEST HARDTOP MANUFACTURER

RS HARDTOP
FITTING INSTRUCTIONS



NISSAN NP300/D23 NAVARA DOUBLE CAB

1ST EDITION REVISION 2

Please read these instructions carefully. If you have any questions regarding the fitting of this item call 01384 485405 or email fitting@autostylinguk.com.

Failure to comply with these instructions may affect any warranty considerations

KIT CONTENTS



1 x RS Hardtop.



1 x Roll Tailgate tape.



6 x Clamps.



2 x Wire connectors.

Also included:
Hardtop Keys.

Tools Required:

- 14mm Spanner/socket.
- 10mm Spanner/socket(x2).
- Screwdriver (Phillips & Torx).
- Torque Wrench.
- Drill/driver.
- Multimeter.
- Silicone sealant.
- Water spray & Squeegee.
- Pliers.
- Insulation tape.
- Soldering kit (optional).

PREPARATION



1. Gel canopy:
Remove the banding and plastic wrapping.



1. Painted canopy:
Remove banding and cardboard packaging

2. Open the door of the hardtop. Inside, remove the screws fixing the canopy to the pallet
3. Locate the fitting kit and check the contents.

OVER RAIL BED LINERS can cause the hardtop to leak due to an uneven surface. Therefore, Auto Styling Truckman highly recommends converting to or replacing with an under rail bed liner.



4. Completely unscrew each of the clamps.



5. If a guard frame is fitted, extract the screws and remove it. Replace the screws and torque to Nissan specification.



6. Thoroughly clean the vehicle's rear window and the top surface of the bed rails



7. Remove the keys from the inner door handle.



8. Just before fitting the canopy, fill any gaps between the front and side rails with sealant.



HEAVY LIFTING

We recommend the use of 4 people to lift the hard top.



9. With the canopy rear door and the vehicles tailgate closed, lift the canopy on to the back of the vehicle.



10. Check that the canopy is central on the vehicle bed.



11. Make sure the front edge of the canopy and the bulkhead rail of the vehicle are level.



12. The seal at the base of the rear door should just be touching the tailgate.



13. Assemble the clamps, in position, along the side rails.



14. Tighten the clamps to 8Nm (start with the rear ones).

NEED ADVICE?

Contact us on 01384 485405 or fitting@autostylinguk.com



15. Re-check the position of the canopy and door. If necessary, slacken off the clamps, adjust the position and re-tighten them.

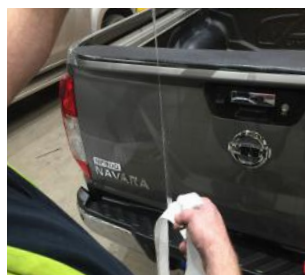
A strip of clear protection tape is supplied in the kit to prevent abrasion to the rear of the tailgate. It is specially shaped and must be fitted in the correct orientation.



1. Thoroughly clean the rear edge of the vehicle's tailgate and spray with water.



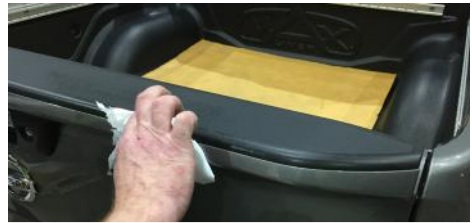
2. Unroll the protective tape.



3. Peel away a little of the backing paper.



4. Carefully apply the tape, where the door seal touches, removing any bubbles as you go. Use a squeegee if possible.



5. Dry the area gently with a cloth taking care not to move the tape.

Caution: Auto electrics should only be carried out by a competent person. Vehicle wire colours are listed as a guide and may vary on some models.

The function of each wire should be checked before any connections are made.

Ensure the ignition is switched off and the battery -Ve terminal disconnected before connecting any wires.

STANDARD SPECIFICATION: The RS canopy is fitted with a battery operated interior light (4 x AAA cells fitted) and a high level third brake light as standard. This section describes how to connect the brake light and how to disable the vehicle's third brake light.



1. Remove the screws from the O/S/R light cluster.



2. Release the unit.

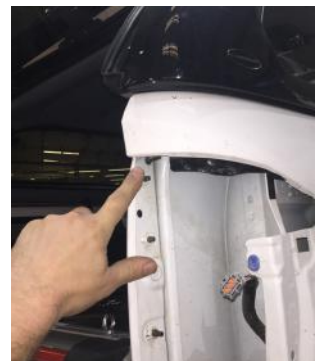


3. Disconnect it and set aside.



4. Pass the wires for the brake light (located at the rear driver's side of the canopy) through the gap under the vehicle's side rail and into the light recess.

5. Draw the wires through to the light recess.





6. Either use the connectors provided or solder the canopy's brake light wires to the vehicle's loom as shown below.

WIRE COLOUR GUIDE

HARDTOP	VEHICLE	NOTES
RED	YELLOW	+12V when the brake pedal is depressed.
RED/BLACK	GREY	Continuity with vehicle body -Ve

The vehicle's rear high level brake light should be disabled to prevent glare in the rear view mirror. Steps 7 to 10 describe the procedure for this.



7. In the driver's door sill, unclip and remove the trim plate.



8. Open the cover of the plastic box to expose the wires.



9. Locate the single white wire in the vehicle loom. Test that it signals +12V when the brake pedal is depressed.



10. Cut the wire bend back and insulate the cut ends.



11. Re fit the sill trim and rear light unit.

12. Test the operation of the brake light.

13. Switch the light unit to 'Door'. The light will illuminate when the door is opened.



14. This completes the installation of the **TRUCKMAN** RS hardtop. Refer to the rear cover for care and maintenance information.

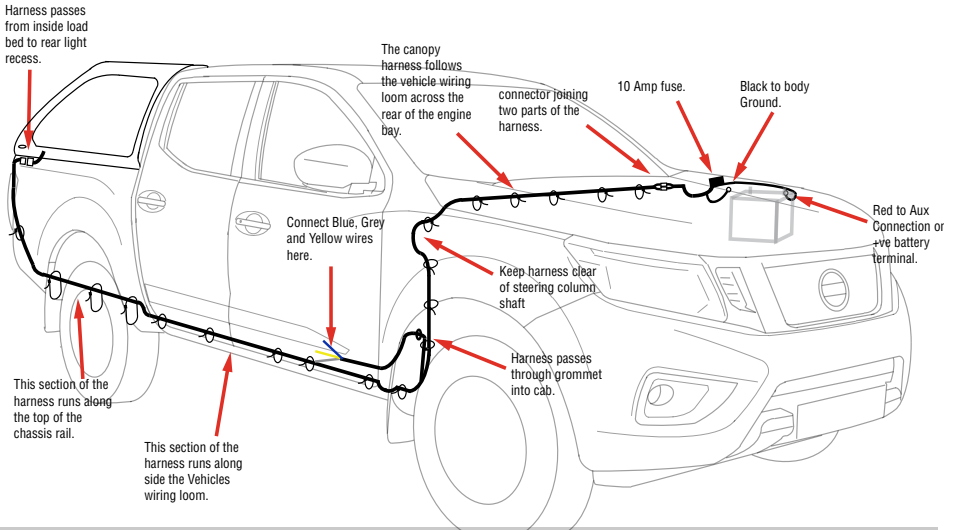
OPTIONAL SPECIFICATION: The remote locking version of the RS canopy also features a 12V automatic interior light in addition to the standard brake light. A wiring harness kit is provided and this section describes how to connect it.

Caution: Auto electrics should only be carried out by a competent person.

Vehicle wire colours are listed as a guide and may vary on some models.

The function of each wire should be checked before any connections are made.

Ensure the ignition is switched off and the battery -Ve terminal disconnected before connecting any wires.



WIRE COLOUR GUIDE

HARDTOP

FUNCTION

VEHICLE

NOTES - *Checked on a 2016 NP300*

BLUE
YELLOW
GREY

Brake Light
Central Locking (Lock)
Central Locking (Unlock)

WHITE
LIGHT BLUE
THICK PINK

+12V when brake pedal is depressed.
Will momentarily flash +12V when remote-key is used. (hold door switch).



1. Remove the screws from the O/S/R light cluster.



2. Release the unit-



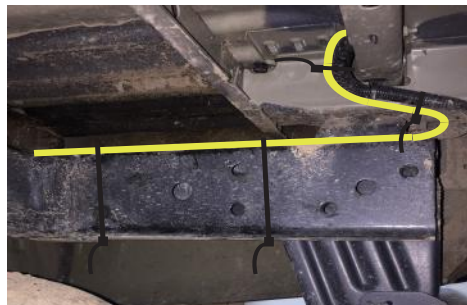
3. -disconnect it and set aside.

4. Remove the wiring harness from the fitting kit box.

5. Unwrap it and pass the end with the small connector through the gap under the side rail at the rear.



6. Draw the harness through into the light recess leaving approx 100mm of cable inside the load bed.

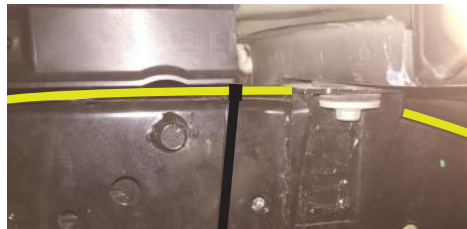


7. Feed the harness down to the chassis following the vehicle's wiring loom.

8. Run the harness forward, along the O/S chassis rail using the large cable ties.



9. Cable tie the harness to the top of the chassis rail up to the front of the rear wheel arch

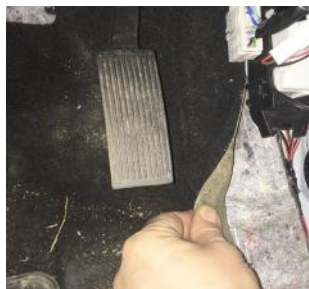


10. After which it is fastened to the vehicles wiring loom on the side of the chassis rail.

11. Remove the driver's door sill cover



12. and the driver's side kick panel.



13. Peel back the carpet and soundproofing.



14. Locate this grommet to the right of the accelerator pedal.

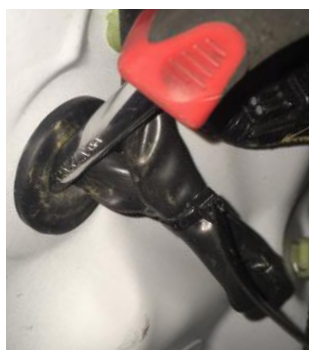


15. Undo the 3 Phillips retaining screws on the O/S/F mud flap.



16. Remove 2 x Torx screws (Yellow) and 4 x body clips (Red) from the wheel arch liner.

17. Run the wiring harness along the vehicle loom and up behind the wheel arch liner.



18. Locate the grommet pictured in step 14, make a small hole and pass the leg of the harness containing the yellow, grey and blue wires through into the driver's foot well.

19. Take the wires to the drivers door sill.



20. In the driver's sill open the cover of the white plastic box exposing the wires inside.

21. Either solder or use the connectors provided to attach the Yellow and Grey wires to the vehicles wiring loom (Refer to page 6).



The vehicle's rear high level brake light should be disabled to prevent glare in the rear view mirror. Steps 22-25 describe the procedure for disabling it and connecting the canopy's high level brake light.



22. Locate the single white wire in the vehicle loom. Test that it signals +12V when the brake pedal is depressed.





23. Cut the white wire.



24. Use connector or solder the blue wire to the section of white wire which leads forward.

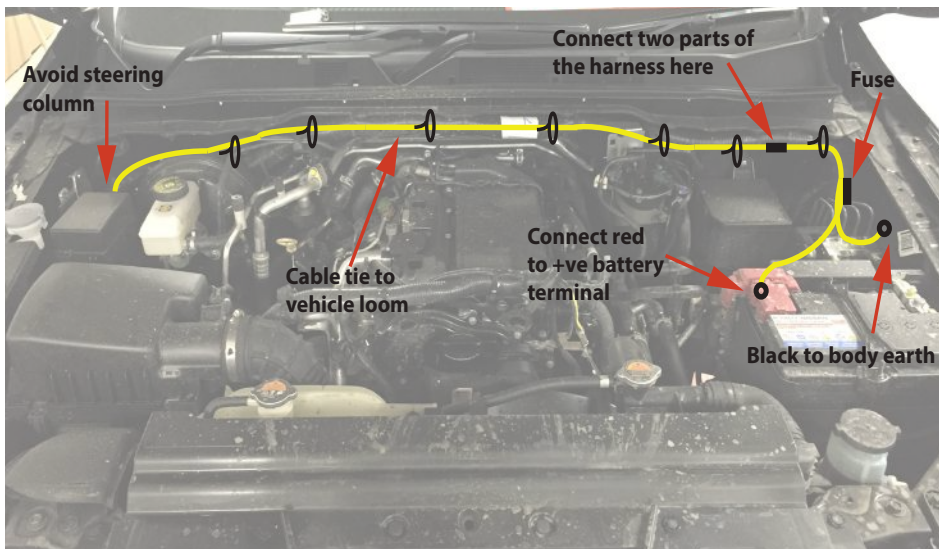


25. Insulate the cut end of the white wire and secure before closing the box.

26. Continue feeding the remainder of the harness up, behind the wheel arch liner and into the engine bay. Follow the existing loom upwards, taking it to the right side of the steering column shaft, securing it with the cable ties supplied.

27. Connect the end section of the harness (containing the fuse) to the rear section.

28. Use the illustration below to route wiring in the engine bay.



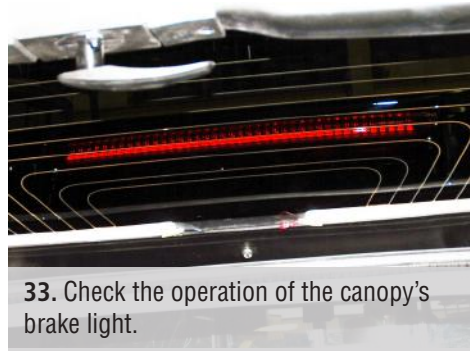
29. Attach the -Ve (Black) wire here.
NOTE: Do not connect to the battery -Ve terminal.

30. RE-fit the rear light, check cable routing and tighten ties.

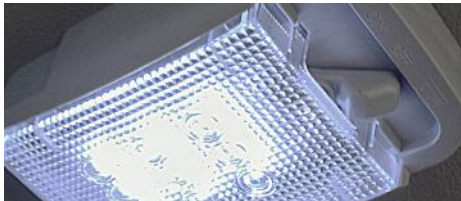
31. Replace the fittings in the wheel arch lining and mud flap.



32. Connect the two parts of the loom together then re-connect the vehicle's battery.



33. Check the operation of the canopy's brake light.



34. Switch the interior light to 'Door'. Check it goes out when the rear door is shut.



35. Close all of the doors and check that the canopy locks and unlocks with the vehicle's remote.



36. Replace all of the trims and cable tie all wires securely away from moving parts or heat sources.

37. This completes the installation of the **TRUCKMAN** RS hardtop. Refer to the rear cover for care and maintenance information.

NEED ADVICE?

Contact us on 01384 485405
or fitting@autostylinguk.com



The Truckman RS with remote locking is designed to rely on the vehicle's central locking. It should lock and unlock with the vehicle's key fob. The keys are provided for use as a back-up only. Ensure the key has been turned fully clockwise and removed in order for the remote locking to operate.

MODELS COVERED:

Truckman R5 Hardtop for
Nissan NP300/D23 Navara (2016-date) Double cab.

These instructions are correct at time of publication only and may be amended without notice. For the latest version contact fitting@autostyling.com or call us on 01384 485405

IMPORTANT NOTES

Ensure the tailgate is closed when driving.

Do not place animals in the load area without adequate ventilation.

Do not exceed vehicle manufacturer’s load limit when using roof rails.

Do not use a pressure-washer near the seals.

MAINTENANCE

AFTER THE INITIAL 300 MILES AND THEN EVERY 3000 MILES

Check the tightness of the fixing clamp bolts (*8Nm Torque*)

3 MONTHLY Use a light oil to lubricate the lock and hinges.

CLEANING

Use ordinary non-ammonia based car cleaning products and a soft or microfibre cloth.



Auto Styling UK Limited,
Unit 14 Narrowboat Way,
Brierley Hill, DY2 0EZ, United Kingdom

Tel: 01384 485 405 **Fax:** 01384 485453

Email: fitting@autostylinguk.com

Web: www.autostylinguk.com

Notice

It is important that safety warnings in the instructions are adhered to.

Do not attempt to fit this product if you are not competent to do so. Improper fitting may affect your warranty considerations.

Due to tolerances of the vehicle fitting of this product may differ from the exact fitting specifications described in the instructions. It is the responsibility of the fitter that the product is installed correctly.

Fitting instruction revisions may be found at www.autostylinguk.com