

TRUCKMAN

THE UK'S LARGEST HARDTOP MANUFACTURER

RS HARDTOP FITTING INSTRUCTIONS

Icon-Invincible-Invincible X



TOYOTA HILUX MK8

DOUBLE CAB

Please read these instructions carefully. If you have any questions regarding the fitting of this item call 01384 485405 or email fitting@autostylinguk.com.

Failure to comply with these instructions may affect any warranty considerations

KIT CONTENTS



1 x RS Hardtop



1 x Protective Tape (Roll)



6 x Clamps

Tools Required:

- 14mm Spanner or Socket Torque wrench.
- Silicone Sealant
- PH2 Screw driver
- Water spray
- Squeegee
- Trimming knife

Also includes: Hardtop Keys

PREPARATION



1. Gel Coat Top
Remove banding and box lid. Lift off sleeve and recover fitting kit.



1. Painted Top
Remove the cardboard packaging and the kit contents carefully from the pallet.



2. Inside the canopy,
unscrew the carriage timbers from the side rails



3. Thoroughly clean
the vehicle's rear window and the hardtop's bulkhead



4. Fill the front corners
of the bed with silicone sealant. (Where the side rails meet the front rail).



5. Remove clamps
from the fitting kit and completely unscrew each of them.



6. Remove the keys
from the inside of the rear door

NOTE: OVER RAIL BED LINERS

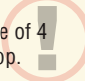


Due to the uneven surface, over rail bed liners can cause the hardtop to leak.

Auto Styling Truckman highly recommends converting to or replacing with an under rail bed liner.

NEED ADVICE?
Contact us on 01384 485405 or fitting@autostylinguk.com

HEAVY LIFTING

We recommend the use of 4 people to lift the hardtop. 

7. With the hardtop door and the vehicle's tailgate closed, lift the canopy and carefully place it on to the vehicle.



8. Begin positioning by lining up the front edge of the hardtop with the front edge of the load bed.

11. Carefully open the rear door and the tailgate. Assemble the clamps in place on the side rails.



9. Check the overhang is the same on both sides.



10. Finally, check that the seal under the rear door is just in contact with the tailgate.



12. Tighten the clamps and then set to 8Nm with a torque wrench.



13. Re-check the position of the canopy and repeat steps 8-12 if necessary.

CHECK THE TORQUE AGAIN AFTER 30 MINS.

A strip of clear protection tape is supplied in the kit to prevent abrasion to the paint on the rear of the tailgate. It is cut to length for the Toyota Hilux tailgate and must be positioned so that it protects the area where the rubber seal on the bottom of the hardtop door touches.



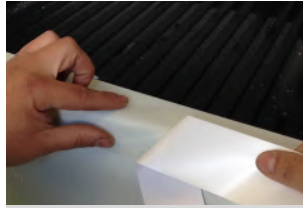
1. Thoroughly clean the top of vehicle's tailgate and apply a fine spray of water.



2. Use a blade to partly remove the backing film. Avoid touching the adhesive with your fingers.



3. Apply the tape approx. 2-3mm from the edge of the tailgate.



4. Peel the backing away whilst laying the tape in position.



5. Make any adjustments to the position then use a squeegee to remove the water and any air bubbles.



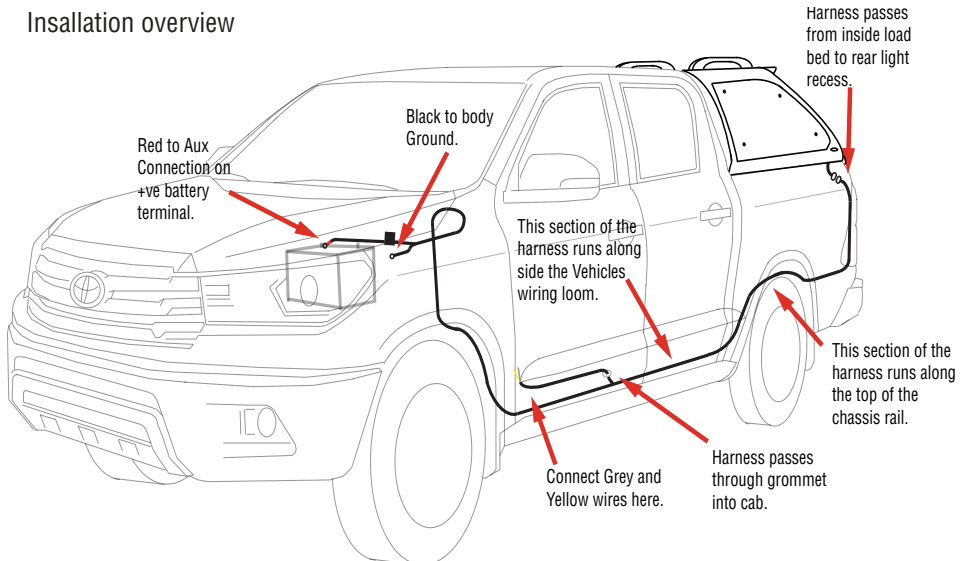
6. Dry the area whilst making sure the position of the tape is not disturbed.



7. This completes fitting of the **TRUCKMAN** RS hardtop.

OPTIONAL SPECIFICATION: The remote locking version of the RS canopy also features a 12V automatic interior light. A wiring harness kit is provided and this section describes how to connect it.

Insallation overview





Caution: Auto electrics should only be carried out by a competent person. Vehicle wire colours are listed as a guide and may vary on some models.

The function of each wire should be checked before any connections are made.

Ensure the ignition is switched off and the battery -Ve terminal disconnected before connecting any wires.

WIRE COLOUR GUIDE

HARDTOP	FUNCTION	VEHICLE	NOTES - Checked on a '16 plate Hilux
YELLOW	Central Locking (Lock)	BLACK	Will momentarily flash +12V when remote
GREY	Central Locking (Unlock)	WHITE	-key used. (hold door switch).



1. Remove the screws from the N/S/R light cluster.



2. Release the unit-



3. -disconnect it and set aside.



4. Take the wiring harness from the fitting kit then, from underneath the N/S rear of the vehicle, pass the grey plug up through this hole, into the light recess.



5. Draw the harness up through the light recess.



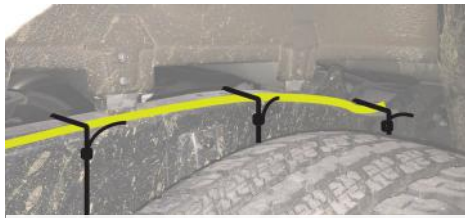
6. Pass the plug through the gap at the top-



7. -into the load bed.



8. Connect the harness to the canopy plug.



1. Take the other end of the harness forward, along the top of the N/S chassis rail.



2. locate this grommet below the N/S front door.



3. Remove the sill trim just inside the front passenger door.



4. Unclip and remove the cover panel forward of the door.



5. Underneath, make a small hole in the grommet and pass the section of harness containing the grey and yellow wire through into the passenger compartment.

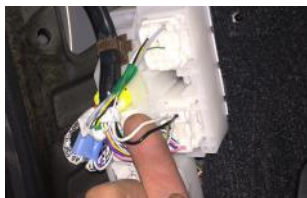
6. Reach under the carpet and lining to locate the wires.



7. Draw the wires through and take them forward through the white clips.



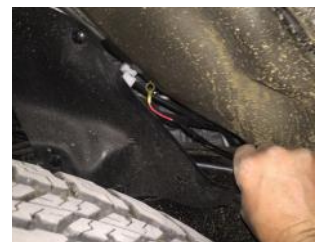
8. In the connectors forward of the door, locate and test the Black and White wires for the remote locking.

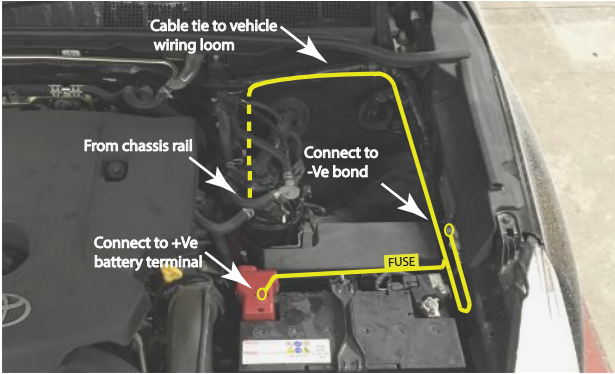


9. Attach the yellow and Grey wires using the connectors provided.



10. Run the other section of the harness forward to the front wheel arch.





1. Take the harness up into the engine bay. Use the cable ties provided to route it as shown left.
2. Connect the Red wire to the battery auxiliary terminal and the Black wire to the body grounding bond. Do not connect to the battery -Ve terminal.

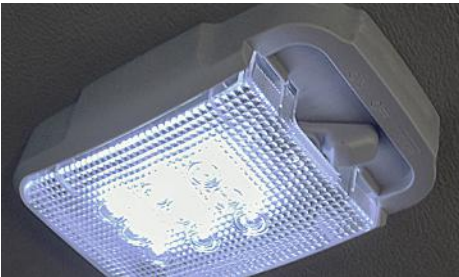


3. Battery +Ve connection.



4. -Ve connection.

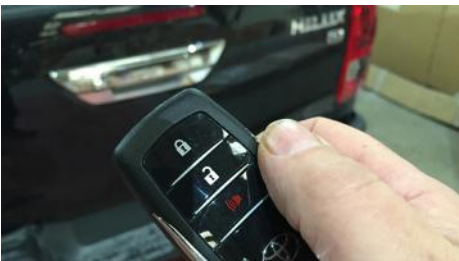
5. Ensure any excess wire is secured and the harness is cable tied away from heat sources or moving parts.
6. Re-connect the battery before testing.



1. Switch the interior light to 'Door'. Check it goes out when the rear door is shut.



2. Push the small button on the left of the handle to open the key cover. Insert the key, ensure it is turned fully clockwise then remove it. This operation engages the keyless remote locking.



3. Close all of the doors and check that the canopy locks and unlocks with the vehicle's remote.



4. Replace the rear light and all of the interior trims.
5. This completes the installation of the optional electrical package.

MODELS COVERED:

Truckman RS Hardtop for Toyota Hilux Mk8 Double Cab 2016-Onwards. Icon, Invincible & Invincible X

These instructions are correct at time of publication only and may be amended without notice. For the latest version contact fitting@autostyling.com or call us on 01384 485405



IMPORTANT NOTES

Ensure the tailgate is closed when driving.

Do not place animals in the load area without adequate ventilation.

Do not exceed vehicle manufacturer's load limit when using roof rails.

Do not use a pressure-washer near the seals.

MAINTENANCE AFTER THE INITIAL 300 MILES AND THEN EVERY 3000 MILES

Check the tightness of the fixing clamp bolts (*8Nm Torque*)

3 MONTHLY Use a light oil to lubricate the lock and hinges.

CLEANING

Use ordinary non-ammonia based car cleaning products and a soft or microfibre cloth.



Auto Styling UK Limited,
Unit 14 Narrowboat Way,
Dudley, DY2 0EZ, United Kingdom

Tel: 01384 485405 **Fax:** 01384 485453

Email: fitting@autostylinguk.com

Web: www.autostylinguk.com

Notice

It is important that safety warnings in the instructions are adhered to.

Do not attempt to fit this product if you are not competent to do so. Improper fitting may affect your warranty considerations.

Due to tolerances of the vehicle fitting of this product may differ from the exact fitting specifications described in the instructions. It is the responsibility of the fitter that the product is installed correctly.

Fitting instruction revisions may be found at www.autostylinguk.com