

FIT1132

TRUCKMAN

THE UK'S LARGEST HARDTOP MANUFACTURER

RS HARDTOP FITTING INSTRUCTIONS



PART NUMBERS: 8HTRS%FORA8D%

FORD RANGER MK8

DOUBLE CAB

1ST EDITION

Please read these instructions carefully. If you have any questions regarding the fitting of this item call 01384 485 405 or email fitting@autostylinguk.com.

Failure to comply with these instructions may affect any warranty considerations

KIT CONTENTS



1 x RS Hardtop



1 x Decal Roll



6 x Clamp Locks



Roll of foam seal

Tools Required:

- Screwdrivers
- Torque wrench 13,17mm
- Spanner 10,17mm
- Side cutters
- Pliers
- Drill 6mm
- Electrical tester/Multimeter



2 x soft foam blocks



Rail cover kit



1 x Touch-up paint



1 x Wiring harness kit

OPTIONAL

Materials Required:

- Automotive grade neutral-cure silicone sealant (transparent)

PREPARATION

IMPORTANT INFORMATION (AS MANDATED BY FORD)

All Ford Ranger Mk8 vehicles must have a 'J brace' installed when a hardtop is fitted.

There are 3 options:

Truckman part numbers-

XAAC4140135 Supplementary Brace Kit For Hardtops Ranger Mk8 (23 on Not Raptor)

XAAC4140138 Supplementary J- Brace Kit Ranger Raptor MK8 (23 on)

Also, Ford OE J Brace kit (Ford part number AMN1WJ27726AA)



Follow the installation instructions supplied with these products.



Before starting to fit the hardtop all OE parts must be removed from the top of the load bed. This includes the rails and hoop (in the case of the wildrak) and the plastic OE rail caps and/or styling bar (in the case of the XLT & Raptor).



NOTE:
Do Not remove the tailgate cap.

XLT/Raptor
Image



1. Remove the cardboard lid and sleeve, set aside and keep intact.



2. Carefully remove the protective wrapping. (On a 'Grand' canopy, open the side windows to release.)

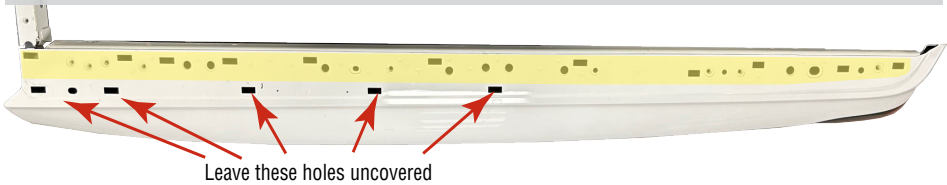


3. Open the bulkhead window and retrieve the fitting kit.

FORD RANGER MK8

4. Clean the top of the load bed rails then locate the clear decal sheet supplied with the hardtop. Apply the long pieces of decal to the top of the bed rails.

NOTE: The decals are shaped to fit each rail. They should cover all of the holes in the bodywork (yellow area) except for those indicated in the diagram below.



5. There will be 5 pieces of decal remaining, 4 large and 1 small. In the front corners of the bed, use the larger pieces to cover the holes on the top and rear of the front rail. The top piece should overlap onto the side rail as shown below.

Fit the remaining small decal over the vertical centre hole in the front rail.



6. Locate the small foam blocks from the fitting kit. Squeeze them into the gaps in the front corners of the load bed.

7. Seal around the foam with neutral cure silicone (shown on red). Seal any additional gaps in the loadbed.

8. Take the roll of self adhesive foam from the fitting kit.

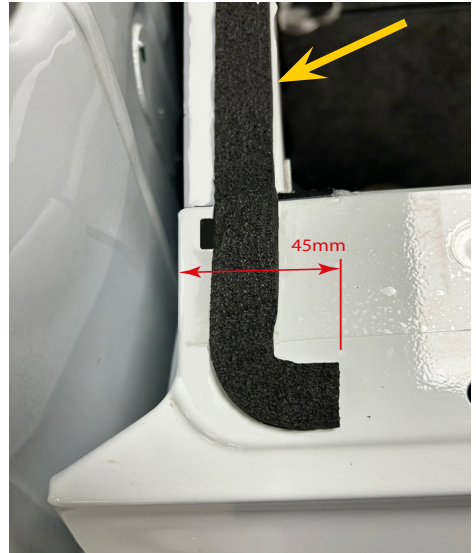
Remove the paper backing and apply across the front of the bed as shown.

NOTE: The foam should be applied towards the REAR edge of the front rail - bridge across to the side rail then curve towards the rear of the vehicle.

Neatly trim the end at 45mm from the front of the rail as shown.

Repeat this shape on the O/S.

Retain the remainder of the foam for a later step.



9. Place the rail covers onto the vehicle, lining up the holes with the threaded holes in the vehicle body.



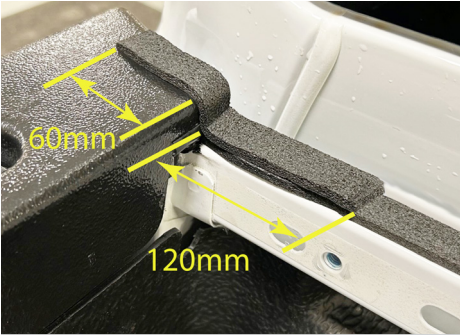
10. Using a pointed tool (such as a small screwdriver) pierce a hole in the decal sheet.



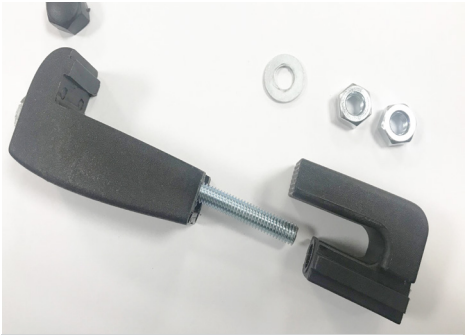
11. Fit an M8 screw and washer into each of the holes and tighten to 8Nm



12. Fit the body clips into the holes on the inside of the rail covers.



13. Apply a second piece of the self adhesive foam to each front corner as shown. Lay it on top of the first piece then up onto the rail cover.



14. Take the clamps from the fitting kit. Remove the locking nuts and washers then completely unscrew the bolt.



15. Clean the rear window of the vehicle.



16. Just before fitting the hardtop apply a generous bead of clear silicone sealant to the top of the foam pieces fitted in step 13.

17. Lift the hardtop onto the vehicle ensuring the wiring connector (in the front corner) is not trapped.

NOTE: It is particularly important that the hardtop is placed vertically down onto the vehicle and not 'dragged' into position as this may affect the effectiveness of the front seal.



HEAVY LIFTING
We recommend the use of 4 people to lift the hard top.





18. Start positioning the hardtop by aligning the front/lower corners of the hardtop with the vehicle bed.



19. Check that the door and door aperture are aligned centrally with respect to the vehicle's tailgate.



20. Next, check the seal under the rear door is just touching the tailgate. Make adjustments if necessary.



21. Finally, check that the hardtop is positioned centrally on the vehicle by checking the overhang towards the front.



22. Carefully open the hardtop. Locate the gaps in the rubber trim and assemble a clamp in each position.



23. Tighten the clamps evenly. Start with the front pair, then rear, then centre gradually reaching 8Nm.

Check the torque again after 30 mins.



24. Ensure the rear door fully latches when closed firmly (the seal under the door should now be slightly compressed).



25. Also check the rear door closes smoothly and the door strikes are aligned with the door latches. If necessary, the strikes may be adjusted as shown to achieve this.



26. After 30 mins. re-torque the clamp bolts. Now fit the washer and locking nuts.

NOTE: Fit the first nut **HAND TIGHT** then lock with the second nut using 2 spanners. Do not use a torque wrench.

OPTIONAL REMOTE LOCKING

For manual locking hardtop go to step 42

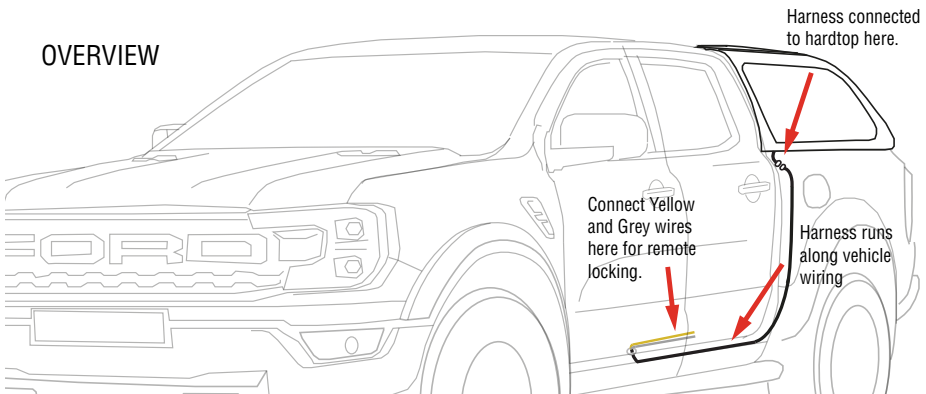
Caution: Auto electrics should only be carried out by a competent person. Vehicle wire colours are listed as a guide and may vary on some models.



The function of each wire should be checked before any connections are made.

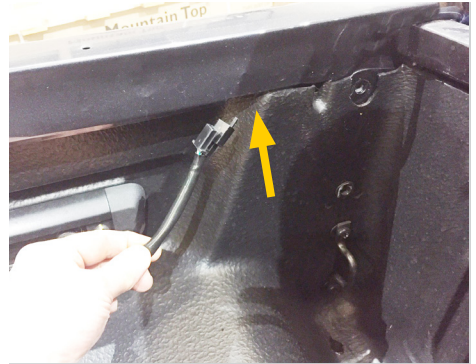
Ensure the ignition is switched off and the battery -Ve terminal disconnected before connecting any wires. Ensure the harness is securely cable tied before using vehicle.

OVERVIEW





27. Take the wiring harness from the fitting kit. Straighten it out noting the large grey plug at one end and the bare yellow and grey wires at the other.



28. Locate the gap in the vehicle body in front left corner of the load bed (under the rail). NOTE: You may need to temporarily remove the front clamp.



29. Feed the end of the harness, containing the two wires through the gap. Draw the harness through from below (leave approx 10cm of harness and the plug inside the load bed).



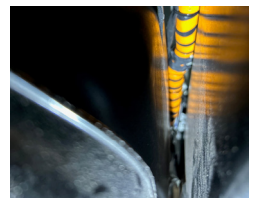
30. The harness should emerge at the front of the rear wheel arch.



31. Pass The harness over the chassis rail, to the rear of the body mounting, then run it forward along the vehicle wiring loom wrapped in orange tape.

Use the cable ties provided.

NOTE: Avoid interference with fuel and brake lines.





32. At the end of the orange taped section of harness, cross back over the chassis rail to the outside here.



33. At this point, locate this grommet in the floor of the cab then remove it.



34. Open the front passenger door. In the footwell, remove the fir tree clip in the front of the sill trim.



35. Carefully lift the sill trim whilst releasing the clips. Operate the bonnet release then lift the trim clear giving access to the wiring below.

36. Drill a 6mm hole in the centre of the grommet removed in step 33

37. Feed the leg of the harness containing the yellow & grey wires through the hole in the grommet then pass this through the hole in the floor. Refit the grommet then draw the harness into the sill.



WIRE COLOUR GUIDE

HARDTOP	FUNCTION	VEHICLE	NOTES (for testing wire function)
YELLOW	Central Locking (Lock)	medium GREY/BROWN	<u>Door catch should be operated</u> - these
GREY	Central Locking (Unlock)	medium BROWN/GREEN	wires flash +12V using the remote.



38. Unclip the trim at the base of the 'B' post. Locate this section of the vehicle wiring harness.



39. Carefully remove the spiral tape (do not use a blade) then locate the central locking wires in accordance with the table above. Test the wires for signal then connect the Yellow and Grey wires using the red splice connectors supplied.



40. Connect the harness plug to the hardtop plug. With all of the doors closed, check that the hardtop locks and unlocks with the vehicle's remote. NOTE: The key should be turned clockwise and removed in order for the remote locking to operate.

41. Re-wrap the vehicle wiring, cable tie all wires away from moving parts or heat sources. Replace the trims and seals then perform a final test.



The Truckman RS hardtop is designed to rely on the vehicle's central locking. It should lock and unlock with the vehicle's key fob. The keys are provided for use as a back-up only. Ensure the key has been turned fully clockwise and removed in order for the remote locking to operate.

NOTE: The Ford Ranger is fitted with a security device which ensures that the vehicle doors cannot be left accidentally unlocked. If 'Unlock' is activated using the key fob and one of the cab doors is not opened within 20 seconds the vehicle will automatically re-lock. Fitting a hardtop to the vehicle does not over-ride this feature. **Take care not to leave the vehicle keys in the load bed.**



The Truckman Luxury hardtop is designed to rely on the vehicle's central locking. It should lock and unlock with the vehicle's key fob. The keys are provided for use as a back-up only. Ensure the key has been turned fully clockwise and removed in order for the remote locking to operate.

NOTE: The Ford Ranger is fitted with a security device which ensures that the vehicle doors cannot be left accidentally unlocked. If 'Unlock' is activated using the key fob and one of the cab doors is not opened within 20 seconds the vehicle will automatically re-lock. Fitting a hardtop to the vehicle does not over-ride this feature. **Take care not to leave the vehicle keys in the load bed.**

MODELS COVERED:

Truckman RS hardtop (manual and remote locking) for Ford Ranger Mk8 (2023-) Double cab

These instructions are correct at time of publication only and may be amended without notice. For the latest version contact fitting@autostyling.com or call us on 01384 485405

IMPORTANT NOTES

Ensure the tailgate and side windows (if applicable) are closed when driving.

Do not place animals in the load area without adequate ventilation.

Donot exceed vehicle manufacturer's load limit when using roof rails.

Do not use a pressure-washer near the seals.

MAINTENANCE

AFTER THE INITIAL 300 MILES AND THEN EVERY 3000 MILES

Check the tightness of the fixing clamp bolts (*8Nm Torque*)

3 MONTHLY Use a light oil to lubricate the lock and hinges.

CLEANING

Use ordinary non-ammonia based car cleaning products and a soft or microfibre cloth.



Auto Styling Truckman Group Limited,
Unit 14 Narrowboat Way,
Dudley, DY2 0EZ, United Kingdom

Tel: 01384 485 405 **Fax:** 01384 485 453

Email: fitting@autostylinguk.com

Web: www.autostylinguk.com

Notice

It is important that safety warnings in the instructions are adhered to.

Do not attempt to fit this product if you are not competent to do so. Improper fitting may affect your warranty considerations.

Due to tolerances of the vehicle fitting of this product may differ from the exact fitting specifications described in the instructions. It is the responsibility of the fitter that the product is installed correctly.

Fitting instruction revisions may be found at www.autostylinguk.com