

FIT 1029

AutoStyling **TRUCKMAN**

RS HARDTOP FITTING INSTRUCTIONS



FORD RANGER MK5&6 SUPER CAB

Please read these instructions carefully. If you have any questions regarding the fitting of this item call 0845 6444704 or email fitting@autostylinguk.com.

Failure to comply with these instructions may affect any warranty considerations

KIT CONTENTS



1 x AeroTop Hardtop



1 x Protective Tape (Roll)



6 x Clamp Locks



2 x Scotch Locks

Also includes:
VHB Wipe
Hardtop Keys

Tools Required:

T30 & T40 Torx bits & wrench.
PH2 screw driver.

1x14mm Spanner/socket.
(Use torque wrench if possible)

Silicone Sealant.

Drill with 3 & 11mm bit.

Scissors

Pair of pliers.

Tape measure.

PREPARATION



1. Gel Coat Top

Remove the shrink wrap packaging, retrieving the kit contents before disposal.



1. Painted Top

Remove the cardboard packaging and the kit contents carefully from the pallet.



2. Remove the clamps from the fitting kit and completely unscrew them.



3. Remove all of the fixings from the ladder rack-



4. and lift it away from the vehicle.



NOTE: Ford Rangers have a high level third brake light mounted on the rear of the cab. This must be disconnected to avoid glare in the rear view mirror. The larger unit on the Mk6 (2016-) must be completely removed and replaced with a blanking plate which is supplied by Truckman.



5. Unclip the cover from the vehicle's third brake light.



6. Unscrew the light unit and disconnect the cable.



7. (MK5 2012-2016) Replace the disconnected brake light, refit the screws and the cover.



7. Mk6 (2016-) Remove the light unit and replace with the plastic blanking plate supplied.



8. In preparation for the electric installation later, unscrew the two fasteners and remove the driver's side rear light cluster.



9. Drill an 11mm hole from the bed interior into the rear light housing and fit a grommet.



OVER RAIL BED LINERS: Due to the uneven surface Auto Styling Truckman Recommends replacing or converting to an under rail bed liner.



10. Thoroughly clean the pick-up's rear window and the hardtop's bulkhead window.



11. Wipe down the top of the vehicle bed.



12. Fill the front corners of the bed with silicone sealant. (Where the side rails meet the front rail)

HEAVY LIFTING

We recommend the use of 4 people to lift the hard top.



13. With the tailgate closed, lift the hardtop on to the vehicle.



14. Loosely fit the clamps, 3 on each side. Measure the positions from the front of the canopy as below.

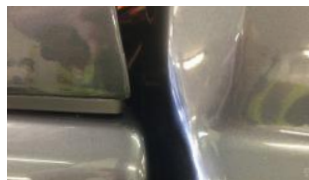
200mm,
900mm
1600mm



15. Adjust the position of the canopy so that the gap between the tailgate and the plastic closure angle is approx 10mm.



17. Align the top centrally on the vehicle bed.



16. Check that the top lines up with the vehicle bed and does not overhang.



18. Tighten the clamps gradually, to 8Nm. Re-check after 30 minutes.



19. Re-check the position and repeat steps 14-18 if necessary.



A strip of clear protection tape is supplied in the kit to prevent abrasion to the paint on the rear of the tailgate. It is cut to length for the Ford Ranger tailgate and must be positioned so that it protects the area where the rubber seal on the bottom of the hardtop door touches.



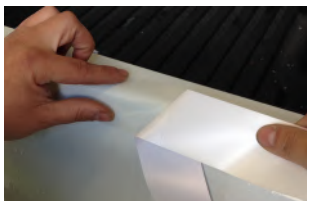
1. Thoroughly clean the top of vehicle's tailgate and apply a fine spray of water.



2. Use a blade to partly remove the backing film. Avoid touching the adhesive with your fingers.



3. Apply the tape approx. 2-3mm from the edge of the tailgate.



4. Peel the backing away whilst laying the tape in position.



5. Make any adjustments to the position then use a squeegee to remove the water and any air bubbles.



6. Dry the area whilst making sure the position of the tape is not disturbed.



CAUTION: Auto electrics should only be carried out by a competent person. Vehicle wire colours are listed as a guide and may vary on some models. Check the function of each wire with a multimeter before fitting the harness.

The RS canopy is supplied with a brake light as standard. This section describes how to connect it.

1. Pass the hard top's brake light wires through the grommet installed earlier and into the vehicles rear light housing.

2. With the ignition off, connect the wires using scotch locks as below.



3. Check the operation of the brake light and replace the rear light cluster.

The installation of your **TRUCKMAN** hardtop is complete.

WIRE COLOUR GUIDE

HARDTOP	FUNCTION	VEHICLE	NOTES
RED	Brake light +ve	GREEN	- Checked on a 14 plate Ranger Mk5 +12V when brake pedal is depressed Continuity with vehicle -ve
RED/ BLACK	Brake light -ve	BLACK	

Remote locking and interior light are offered as an option. Use this section to install them.

KIT CONTENTS:



1 X Wiring Loom



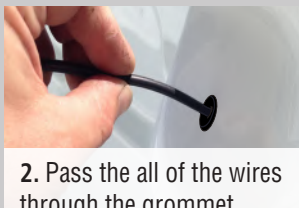
1 X Pack Cable Ties



1 X Pack Scotch Locks



1. Connect the wiring loom to the plug in the rear of the hardtop.



2. Pass the all of the wires through the grommet installed earlier and into the vehicles rear light housing.



3. With the ignition off, connect the Black and plain Green wires using the guide overleaf.



4. Run the black twin-core wire (containing the red and blue wires) down to the chassis rail and take it forward to below the drivers seat.



5. Remove the drivers sill cover.



6. Pass the wires through this grommet and (under the driver's seat) and into the sill area.

WIRE COLOUR GUIDE

HARDTOP	FUNCTION	VEHICLE	NOTES - <i>Checked on a 14 plate Ranger Mk5</i>
GREEN	Brake light +ve	GREEN	+12V when brake pedal is depressed
BLACK	Brake light -ve	BLACK	Continuity with vehicle -ve
RED	Central Locking (Lock)	GREY/BROWN	Door switch needs to be held down, but-
BLUE	Central Locking (Unlock)	PURPLE/GREEN	These wires flash +12V using the remote.
GREEN / RED	Interior light +ve	BATTERY +VE	For this vehicle, Extend wire to battery.



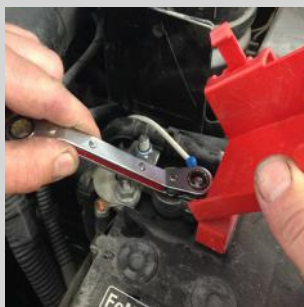
7. Remove the driver's kick panel.



8. Use the Scotch locks provided to connect the red and blue wires to the vehicle's wiring loom behind the driver's kick panel. Use the table above as a guide to the wire colours.

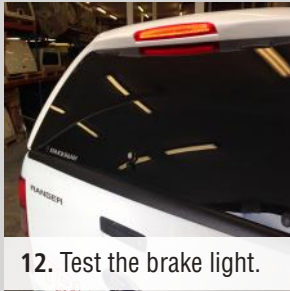
9. For the interior light (if fitted) extend the Red/Green wire using 0.5mm/11A min auto wire (not included).

10. Connect the extended wire to the +ve terminal of the battery.



11. Close all of the doors and check the operation of the remote locking.





12. Test the brake light.

13. Check the operation of the interior light (if fitted).

14. Replace the interior trim covers and secure all wires with the cable ties supplied.

The installation of your **TRUCKMAN** hardtop is complete.

NEED ADVICE?

Contact us on 0845 644 4704 or fitting@autostylinguk.com

Easily add Truckman Delta Roof Bars

Always in stock



Increase your carrying capacity with strong steel Truckman Delta bars. Add the two or three bar system to your new hardtop and see how easy it is to transport ladders, ply wood and other long items.

Truckman Delta bars can be easily added to your hardtop. Simply call our Sales team on 0845 644 4704 and arrange to have them fitted at our West Midlands centre or order them to fit yourself (full instructions included).

We also supply a range of useful add-ons for Delta bars including load stops, Safeclamps and rear rollers.

- Specially designed system for Truckman hardtops
- High tensile steel provides maximum strength
- Heavy duty zinc plating for excellent corrosion resistance
- TUV GS safety approved
- Available for Aerotop, Classic and Utility tops

Call our Sales team on: 0845 644 4704

MODELS COVERED:

Truckman RS Hardtop for Ford Ranger Mk 5& 6 (2012-) Super cab.

These instructions are correct at time of publication only and may be amended without notice. For the latest version contact fitting@autostyling.com or call us on 01384 485405

IMPORTANT NOTES

Ensure the tailgate and side windows (if applicable) are closed when driving.

Do not place animals in the load area without adequate ventilation.

Do not exceed vehicle manufacturer's load limit when using roof rails.

Do not use a pressure-washer near the seals.

MAINTENANCE

AFTER THE INITIAL 300 MILES AND THEN EVERY 3000 MILES

Check the tightness of the fixing clamp bolts(*8Nm Torque*)

3 MONTHLY Use a light oil to lubricate the lock and hinges.

CLEANING

Use ordinary non-ammonia based car cleaning products and a soft or microfibre cloth.



Auto Styling UK Limited,
Unit 4 Narrowboat Way,
Brierley Hill, DY5 1UF, United Kingdom

Tel: 0845 6444704 **Fax:** 0845 6445014

Email: fitting@autostylinguk.com

Web: www.autostylinguk.com

Notice

It is important that safety warnings in the instructions are adhered to.

Do not attempt to fit this product if you are not competent to do so. Improper fitting may affect your warranty considerations.

Due to tolerances of the vehicle fitting of this product may differ from the exact fitting specifications described in the instructions. It is the responsibility of the fitter that the product is installed correctly.

Fitting instruction revisions may be found at www.autostylinguk.com