

Auto Styling

TRUCKMAN

UTILITY TOP

FITTING INSTRUCTIONS



TOYOTA HILUX MK6-8

**DOUBLE AND
EXTRA CAB**

Please read these instructions carefully. If you have any questions regarding the fitting of this item call 0845 6444704 or email fitting@autostylinguk.com.

Failure to comply with these instructions may affect any warranty considerations

KIT CONTENTS

 1 x Utility Hardtop	 1 x Protective Tape (Roll)	 6 x M8 Bolts	 6 x Fixing Plates	Tools Required 13mm Spanner 13mm Socket Drill Drill Bits (3, 5 & 9mm) Hack Saw Silicon Sealant
 6 x Large M8 Washers	 6 x Nylock Nuts	 1 x Steel Bracket	 6 x Self-Drilling Screws	

PREPARATION



1. Gel Coat Top

Remove the shrink wrap packaging, retrieving the kit contents before disposal.



1. Painted Top

Remove the cardboard packaging and the kit contents carefully from the pallet.



2. Remove the bolts, washers, fixing plates & nuts from the kit.



3. Thoroughly clean the pickup's rear window and the hardtop's bulkhead window (if fitted) and the top of the vehicle bed.

OVER RAIL BED LINERS

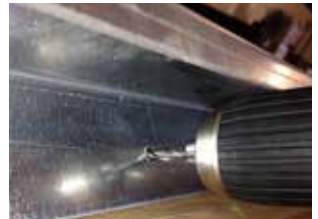
can cause the hardtop to leak due to an uneven surface. Therefore, Auto Styling Truckman highly recommends converting to or replacing with an under rail bed liner.



4. Lay the steel bar across the backboard.



5. Mark and cut to fit between the rails.



6. Mark and drill six 5mm holes to allow the bar to fix up against the backboard.

7. Attach the bar to the backboard level with the side rails using the supplied screws (a 3mm pilot hole helps accuracy).

8. Apply silicon sealant along all joints to protect against water ingress.

9. From the front of the load bed, measure and mark the side rails as follows:

Double Cab: 300mm, 780mm, 1400mm
Extra Cab: 200mm, 900mm, 1650mm

Tip: Use masking tape & pencil. Extend the lines to the inside of the bed or liner to aid alignment later. Mark a cross on top, 15mm from the inside edge of the rail.



10. Drill a 3mm pilot hole 15mm from the inside edge at each mark. Drill again with an 9mm bit.

NEED ADVICE?
Contact us on 0845 644 4704
or fitting@autostylinguk.com



11. Remove all swarf and paint the holes with a zinc rich primer to prevent corrosion.

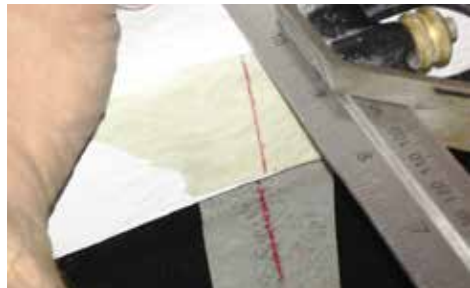


12. Lift the hardtop onto the bed

HEAVY LIFTING
We recommend the use of 4 people to lift the hardtop.



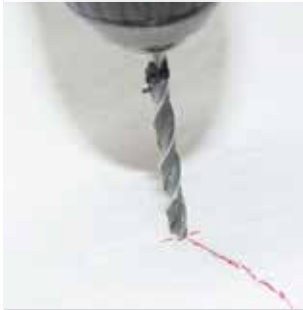
13. Align the top centrally and ensure that the seal under the hardtop door is just touching the tailgate.



14. With the door closed, measure and mark the same dimensions as before onto the top (using Step 9's lines as a guide).

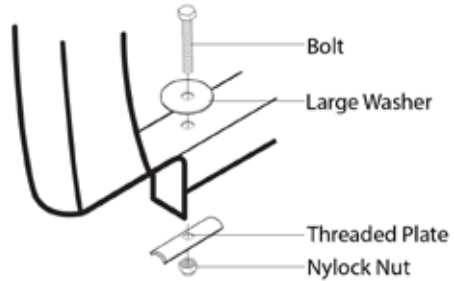
FITTING

15. Drill 3mm pilot holes to line up with the original holes. Re-check hardtop alignment.



16. Complete the holes with a 9mm drill bit.

TIP: If an angled drill is available, this may be used to make the holes in the canopy from underneath, through the holes in the vehicle.



17. Bolt the hardtop (without nylock nut) to the vehicle as shown in the diagram and tighten to 6-8Nm.

18. Add the nylock nut (also to 6-8Nm).

TAILGATE PROTECTION



19. Thoroughly clean the top of vehicle's tailgate.



20. Unroll the protective tape and cut one end square.

TIP: Apply a fine spray of water to the top of the tailgate before positioning the protective tape. This will allow a little 'adjustment' before the water dries and the adhesive fixes the tape into position.



21. Partly remove the backing from the tape.



22. Carefully apply it to the tailgate where the door touches, rubbing outwards to remove any bubbles as you go.

NEED ADVICE?
Contact us on 0845 644 4704
or fitting@autostylinguk.com



23. Trim the tape square at the other end.

IMPORTANT NOTES

Bed liners **must** be under rail for a good fit.
Ensure the tailgate and side windows (if applicable) are closed when driving.
Do not place animals in the load area without adequate ventilation.
Do not exceed load limit when using roof rails.
Do not use a pressure washer near the seals.

MAINTENANCE

Use a light oil to lubricate the lock and hinges.
Check the tightness of the fixing clamps / bolts.
(8Nm Torque)

CLEANING

Use ordinary non-ammonia based car cleaning products and a soft or microfibre cloth.

NEED ADVICE?

Contact us on 0845 644 4704
or fitting@autostylinguk.com





STAINLESS STEEL STYLING

Add that extra style and protection to your Toyota Hilux Mk 6-8 with stunning stainless steel accessories, such as this A-Bar.

IMPORTANT NOTES

Bed liners **must** be under rail for a good fit. Ensure the tailgate and side windows (if applicable) are closed when driving. Do not place animals in the load area without adequate ventilation. Do not exceed load limit when using roof rails. Do not use a pressure washer near the seals.

MAINTENANCE

Use a light oil to lubricate the lock and hinges. Check the tightness of the fixing clamps / bolts. (*6-8Nm Torque*)

CLEANING

Use ordinary non-ammonia based car cleaning products and a soft or microfibre cloth.

MODELS COVERED:

Truckman Utility, semi-high roof hardtop with side access doors for:
Toyota Hilux Mk6-8 (2005-2015) Double cab (with or without cabin guard).
Toyota Hilux Mk6-8 (2005-2015) Extra cab (not 'J-deck' models)

These instructions are correct at time of publication only and may be amended without notice. For the latest version contact fitting@autostyling.com or call us on 0845 644 4704



AutoStyling
TRUCKMAN

Auto Styling UK Limited,
Unit 4 Narrowboat Way,
Brierley Hill, DY5 1UF, United Kingdom

Tel: 0845 6444704 Fax: 0845 6445014

Email: fitting@autostylinguk.com

Web: www.autostylinguk.com

Notice

It is important that safety warnings in the instructions are adhered to.

Do not attempt to fit this product if you are not competent to do so. Improper fitting may affect your warranty considerations. For your safety, we recommend that any wiring is performed by qualified Auto Electricians.

Due to tolerances of the vehicle fitting of this product may differ from the exact fitting specifications described in the instructions. It is the responsibility of the fitter that the product is installed correctly.

Fitting instruction revisions may be found at www.autostylinguk.com