

FIT 1093

TRUCKMAN

THE UK'S LARGEST HARDTOP MANUFACTURER

INSTALLATION INSTRUCTIONS STYLING BAR KIT FOR RETRAX ROLLER TONNEAU



Nissan NP300 & Mercedes X-Class

TRUCKMAN PART NUMBER: 8RABRBSNID41D

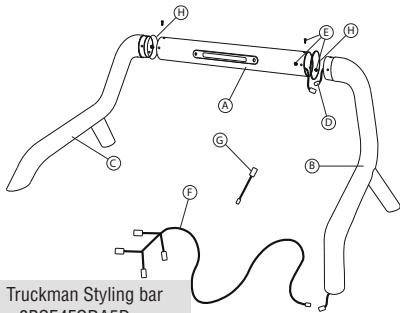
1ST EDITION

RETRAX - STYLING BAR

Please read these instructions carefully. If you have any questions regarding the fitting of this item call 01384 485405 or email fitting@truckman.com.

Failure to comply with these instructions may affect any warranty considerations

KIT CONTENTS



Truckman Styling bar
8BSE4FORA5D or
8BSEB4FORA5D



D - Intermediate harness.



E - M6 x 20mm hex
socket button screws



F - Brake light harness
Nissan NP300 & Mercedes.



G - Vehicle Brake light
disconnection jumper.



H - Joint cover O-rings



I - Set of 4 Adapter plates
ZMAT880



J - Set of 4 self adhesive
rubber pads ZRUB841



K - 8 x M10 wafer headed
screws ZFIX1043



L - Set of domed security nuts
& spanner ZFIX900



M - Retrax Accessory Stud
set ZMAT882



N - 4 x Cable ties
ZZZCABLETIE005



O - 2 x Self adhesive cable
tie base ZFIX773

TOOLS REQUIRED: 5mm hex driver, 4mm hex driver, 20mm hole cutter, Masking tape, Thread locking solution

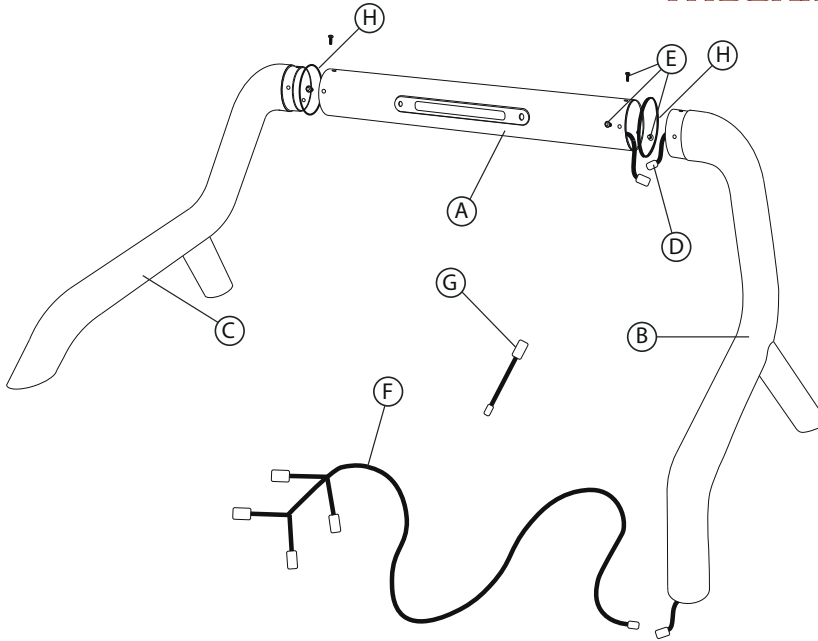
Follow the assembly instructions supplied with the Retrax tonneau. It will be necessary to cut a hole for the brake light wire in the rail of the Retrax so ensure it secured on to the vehicle or on a flat surface.



1. Locate the R/H section of the styling bar (B) and the intermediate harness (D) from the box. Feed the smaller end of the intermediate harness through the hole in the rear foot of the bar.

Continue feeding the harness through until the end emerges at the other end of the tube.





2. Fit a Joint cover O-ring (H) over each end of the centre section of the styling bar c/w brake light (A).



3. Connect the end of the intermediate harness to the plug on the centre bar.



4. Fit the centre and R/H section of the bar together (ensuring brake light is facing towards the rear).



5. Fit the screws (using thread locking solution) then slide the joint cover O ring into place.

RETRAX - STYLING BAR



6. Repeat steps 4 and 5 on the left side.



7. Apply the self adhesive foam pads (J) to the lower side of the adapter plates (I).

NOTE: The lower side of the plates have larger counter bored holes.



8. Use the M10 wafer headed screws (K) to fit the adapter plates to the legs of bar. Leave the screws loose enough to allow the plates a little movement.

NOTE: Ensure the adapter plates are correctly orientated (see photo left)

On the O/S/R leg of the bar, the brake light plug passes through the 20mm hole.

9. On the right side rail of the Retrax, measure 713mm from the front edge and 70mm from the inner edge. Mark a point and cut a 20mm hole through the rail. Refer to the photo right.

10. Fit the Retrax on to the vehicle if not already fitted.



11. Fit the accessory studs (M) into the groove in the Retrax rail. There is a cut-out in the groove at the tailgate end to designed to allow this. Fit two in each rail.





12. Lift the bar on to the Retrax.



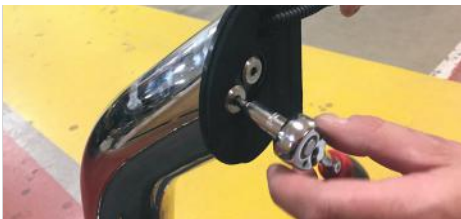
13. Feed the brake light plug through the 20mm hole in the Retrax rail



14. Lower the bar down onto the accessory studs, adjusting the plates if necessary.



15. Use masking tape and a pen to mark the positions of the plates relative to the bar.



16. Remove the bar, apply thread lock to the screws then tighten, carefully maintaining the position of the plates.



17. Refit the bar ensuring the front edge of the plates are 40mm from the front of the tonneau.



18. Remove the masking tape then fit the security nuts (L) with thread lock.



19. Use the spanner supplied to tighten the nuts.

RETRAX - STYLING BAR



20. Remove the fixings from the O/S rear light cluster. (Nissan fixings are in the tailgate shut)



21. Remove it from the vehicle, unplug the connection and set it aside.



22. Feed the smaller end of the brake light harness (F) through this gap and into the truck bed.



23. The harness should emerge here.
TIP: Use a large cable tie to help pull the harness through.



19. Plug the harness into the vehicle and brake light connectors (select the appropriate connectors as the Mercedes and Nissan are slightly different).



20. Connect the harness to the plug leading from the styling bar.



21. Test the brake light then secure the wiring under the rail using the supplied cable ties and bases (N&O).



22. Remove the Driver's door sill trim.

