

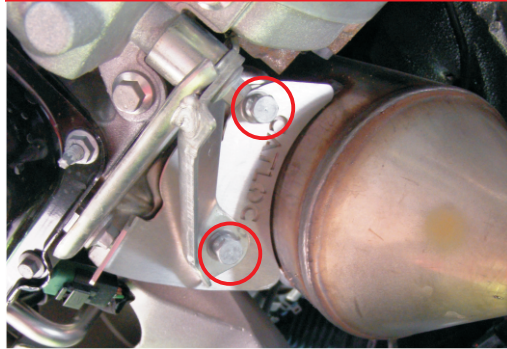
This CATLOC® product is a permanent installation on your vehicle. Read all instructions carefully prior to installation.

* **Permanent Fix Method:** To ensure maximum security, this product is supplied with security shear nuts and bolts. To prevent easy removal of this product, all nuts and bolts must be tightened until the nut head breaks off. This should only be done when instructed and once all final checks have taken place.



IMPORTANT - Marking and Registration Process

This product is supplied with the CATLOC ISR catalytic converter marking and registration system. This is an integral part of the complete anti-theft solution and your catalytic converter should be marked and registered as part of this full installation process (instructions can be found inside the CATLOC ISR pack)



1. Fit Catalytic Converter Protection Plate

Remove two M8 bolts on the catalytic converter mounting bracket. Lever bracket arm to allow CATLOC Protection Plate to slide between and replace original bolts with the 2x security shear bolts and washers as illustrated.

Use * **Permanent Fix Method** on shear bolts once fitted.