

This CATLOC® product is a permanent installation on your vehicle. Read all instructions carefully prior to installation.

\* **Permanent Fix Method:** To ensure maximum security, this product is supplied with security shear nuts. To prevent easy removal of this product, all nuts must be tightened until the nut head breaks off. **This should only be done when instructed and once all final checks have taken place.**



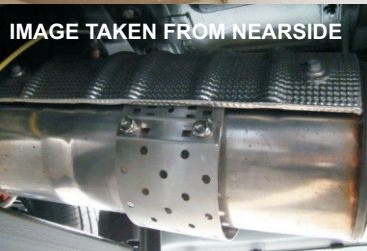
## 1. Locate the vehicle catalytic converter (CAT) and Measure the Circumference

The CAT is located along the exhaust pipe on the off side of the vehicle. Once you have located the CAT you will need to measure the circumference (this is the measurement around the outside).



## 2. Establish Product Setting

The product should be set approximately 15mm smaller than the circumference measurement. With the large plate inside the small plate locate the nearest holes to the desired product setting. Insert two M8 x 16mm coach bolts from the centre of the product facing out. Fit washers and security nuts. Test fitment. If incorrect repeat these steps until fitment is confirmed.



## 3. Locate Clamp

Slide the large plate between the CAT and the heat shield. Insert two M8 x 16mm coach bolts through the correctly established positions, and locate the small plate over the bolt thread. Fit washers and security nuts.



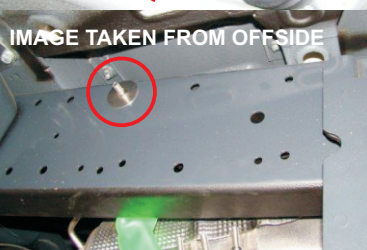
## 4. Attach Chain to Clamp.

With clamp in place, insert M8 x 40mm coach bolt through right hand side fixing hole in flange, fit washer and security nut. Next locate the end link of the chain between the flange as shown and insert two M8 x 40mm coach bolts, ensuring that both pass through the centre of the chain link. Fit washers and security nuts.



## 5. Fit Chain End Bracket and Attach To Vehicle

Ensure the last link of the chain is rotated in position as shown. Insert remaining M8 x 40mm coach bolt through the link in the direction of the arrow, ensuring the bolt locates into the square hole in the bracket. Locate the bolt through the fixing position in the vehicles chassis as circled in picture 6, fit large washer and security nut.



## 6. Check Fitment

With all components fitted, position product to ensure that there is some play in the retaining chain (It is important that the chain is not too tight to prevent natural exhaust movement).

Once position is confirmed, use \* **Permanent Fix Method** on security nut fixings.

## IMPORTANT - Marking and Registration Process

This product is supplied with the CATLOC ISR catalytic converter marking and registration system. This is an integral part of the complete anti-theft solution and your catalytic converter should be marked and registered as part of this full installation process (instructions can be found inside the CATLOC ISR pack).

