

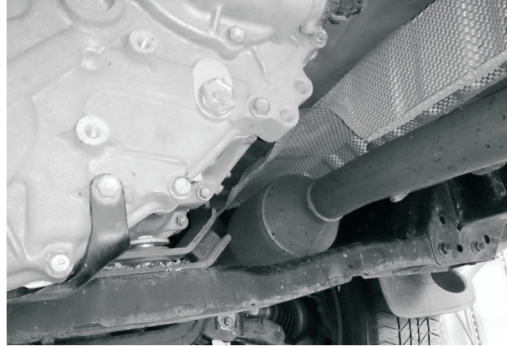
This CATLOC® product is a permanent installation on your vehicle. Read all instructions carefully prior to installation.

* **Permanent Fix Method:** To ensure maximum security, this product is supplied with security shear nuts and bolts. To prevent easy removal of this product, all nuts and bolts must be tightened until the nut head breaks off. This should only be done when instructed and once all final checks have taken place.



IMPORTANT - Marking and Registration Process

This product is supplied with the CATLOC ISR catalytic converter marking and registration system. This is an integral part of the complete anti-theft solution and your catalytic converter should be marked and registered as part of this full installation process (instructions can be found inside the CATLOC ISR pack)



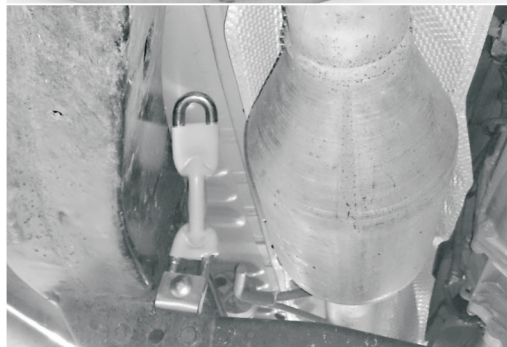
1. Locate the vehicle catalytic converter (CAT) and Measure the Circumference

The CAT is located along the exhaust pipe on the off side of the vehicle. Once you have located the CAT you will need to measure the circumference (this is the measurement around the outside).



2. Establish Clamp Setting

The clamp should be set approximately 15-20 mm smaller than the circumference measurement. With the large plate inside the small plate locate the nearest holes to the desired product setting. Insert two M8 x 20mm coach bolts from the centre of the product facing out. Fit washers and security nuts. Test fitment. If incorrect repeat these steps until fitment is confirmed.



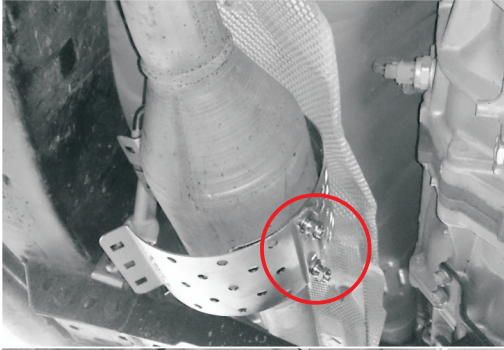
3. Attach Chain Bracket to Vehicle 1 of 2.

Locate the Chain Bracket in position and through the hole in the vehicle sub frame as shown. Ensure the chain is fitted the same as illustration and facing up towards the floor pan of the vehicle.



4. Attach Chain Bracket to Vehicle 2 of 2.

Fit 21mm M8 washer and security nut to thread of bolt on the other side of the sub frame.



5. Locate the Clamp

Slide the clamp into position as shown, ensuring that the adjustment bolts (circled) are facing away from the heat shield.

Note: If fitted the other way round with bolts facing up, there is a slight chance the product will contact on the heat shield causing acoustics.



6. Attaching the Clamp and Chain

With clamp in position around the CAT. Bring the chain down and position between the flange. Insert M8 x 40mm coach bolt through left flange fixing hole, ensuring it passes through chain link, and secure with washer and shear nut.



8. Final Check and Permanent Fix

Insert second M8 x 40mm coach bolt through right flange fixing hole.

With all components fitted and position is confirmed, use * **Permanent Fix Method** on all nut fixings.