

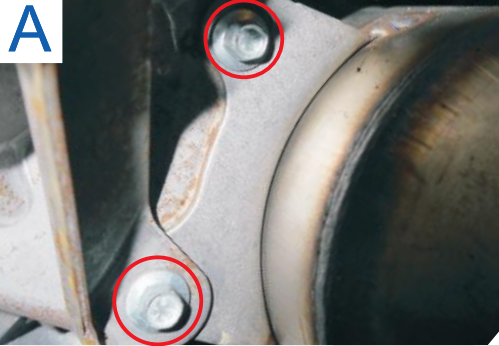
This CATLOC® product is a permanent installation on your vehicle. Read all instructions carefully prior to installation.

*** Permanent Fix Method:** To ensure maximum security, this product is supplied with security shear nuts and bolts. To prevent easy removal of this product, all nuts and bolts must be tightened until the nut head breaks off. This should only be done when instructed and once all final checks have taken place.



IMPORTANT - Marking and Registration Process

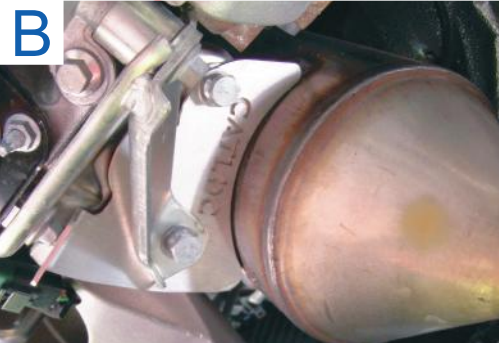
This product is supplied with the CATLOC ISR catalytic converter marking and registration system. This is an integral part of the complete anti-theft solution and your catalytic converter and DPF should both be marked and registered as part of this full installation process (instructions can be found inside the CATLOC ISR pack)



1. Fit Catalytic Converter Protection Plate

Remove two M8 bolts on the catalytic converter mounting bracket as circled in red in picture A. Lever bracket arm to allow CATLOC Protection Plate to slide between and replace original bolts with the 2x security shear bolts and washers as shown in picture B.

Use *** Permanent Fix Method** on shear bolts once fitted.



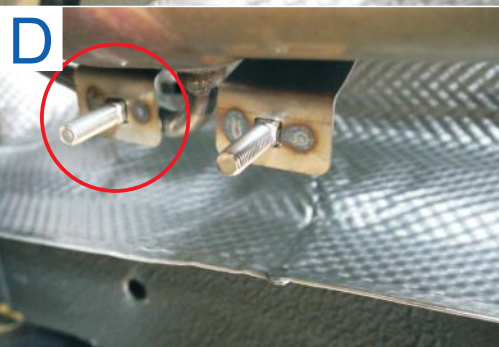
2. Identify location of DPF

The DPF should be located underneath the vehicle on the offside.



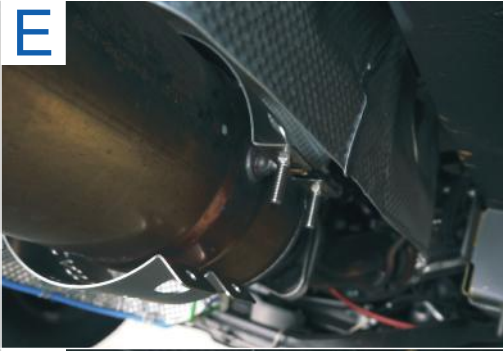
3. Identify clamp for DPF emissions tube

Identify the clamp for the DPF emissions tube and loosen the nut using a 10mm spanner / socket to allow movement of the tube as arrowed in picture C.



4. Locate Large Clamp around the DPF

Locate the large clamp around the DPF ensuring the large cut out positions around the DPF sensor and emissions tube outlet. You will need to move the emissions tube slightly to allow the clamp to sit underneath as circled in picture D. Once this step is completed, the emissions tube should be located back into the clamp and tightened.

E

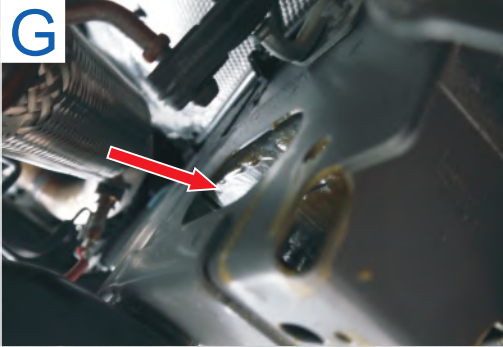
5. Locate the smaller clamp

Locate the smaller clamp with the cutout over the DPF Sensor as in picture E and attach loosely to the larger clamp using the M8 x 30mm coach bolts, washers and M8 shear nuts. The coach bolts should drop into the square holes on the larger clamp.

F

6. Fitting The Chain

Squeeze the 2 halves of the assembled clamp together and locate the chain on the side nearest to the front of the vehicle. Secure in place with M8 shear nuts and washers as in picture F.

G

7. Locate The Sub Frame Chain Bracket

Slide the Sub Frame Chain Bracket through the large elongated hole in the front end of the vehicles sub frame as in picture G. The bracket has an M8 x 400mm coach bolt welded to it.

Allow the bracket to sit in place with the bolt coming through the hole as in picture H.

H

8. Secure the other end of the chain

Using the chain end bracket and cover, secure the chain with an M8 shear bolt and washer to the sub frame chain bracket as in picture I.

I

9. Final Check and Permanent Fix

With all components fitted and position is confirmed, use * **Permanent Fix Method** on all nut fixings.

J