

This Catloc product contains instructions for:

Vehicle: **FORD**
Model(s): **RANGER MARK 6**
Engine(s): **2.2L & 3.2L EURO 6**

AND

Vehicle: **FORD**
Model(s): **RANGER MARK 7**
Engine(s): **2.2L & 3.2L EURO 6**

Please ensure you identify the correct vehicle before fitment, differentiated by the forward catalytic converter fitment.

This CATLOC® product is a permanent installation on your vehicle.

Read all instructions carefully prior to installation.

*** Permanent Fix Method:** To ensure maximum security, this product is supplied with security shear nuts and bolts. To prevent easy removal of this product, all nuts and bolts must be tightened until the nut head breaks off. This should only be done when instructed and once all final checks have taken place.

PLEASE SEE PAGE 2 FOR INSTALLATION PICTURES.

STEP 1 & 2 - Locate, Remove and Discard Factory Bolts

Locate, remove and discard the Factory bolts (circled Picture 1 & 2) on the forward catalytic converter when looking up into engine bay. Replace bolt in Picture 1 with the 20mm Security Shear Bolt supplied - Ensure correct length bolt is used with M8x21mm washer. Replace bolt in Picture 2 with the 16mm Security Shear Bolt supplied - Ensure correct length bolt is used with M8x21mm washer.

STEP 3 - Locating 2 Bolt Bracket

Looking towards the front of the vehicle and on the offside of the rear catalytic converter. Locate two holes in chassis (Picture 3). Insert 2 bolt bracket (short bolt first through large hole (Picture 3))
The small bolt thread should locate through the smaller hole in chassis as shown. Fit washer and security shear nut to thread (Picture 4)

STEP 4 - Fitting Chain Bracket and Securing to Chassis

Fit chain end bracket to twisted end of 3 link chain. (Picture 5)
Locate chain bracket over long thread of bracket on chassis as shown (Picture 6)
Fit washer and security shear nut as shown (Picture 7)

STEP 5 - Establish Clamp Setting (Picture 8)

The clamp should be set approximately 15 - 18mm smaller than the circumference measurement. With the large plate inside the small plate, locate the nearest holes to the desired product setting. Insert two M8x16mm coach bolts from the centre of the product facing out. Fit washers and security nuts. Test Fitment. If incorrect repeat these steps until fitment is confirmed.

STEP 6 - Locating the Clamp

Locate the Clamp around the Catalytic converter and position flange towards the chain.
Insert M8x30mm coach bolt through the rear hole in the flange as shown in picture 9 Circled. Close clamp and loosely secure with Washer and Security shear nut.

STEP 7 - Securing the Chain

Bring the chain down and position between the flange. Insert M8x30mm coach bolt through flange fixing hole, ensuring it passes through chain link, and secure with washer and shear nut. (Picture 10 Circled)

STEP 8 - Clamp Positioning

Position clamp so that the chain allows a small amount of play for exhaust system to move naturally.
Check Fitment of all components.

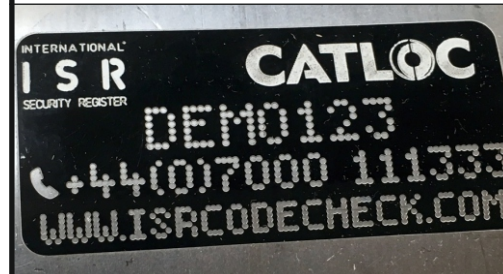
FINAL CHECK and *PERMANENT FIX METHOD (PICTURE 1,2,4,7,8,9 and 10):

Check that all of the components are correctly installed to the vehicle as per instructed.
Once confirmed, use *** Permanent Fix Method** on all nut and bolt fixings.

Example of both a security nut and bolt fixing after the ***Permanent Fix Method** has been carried out.



IMPORTANT

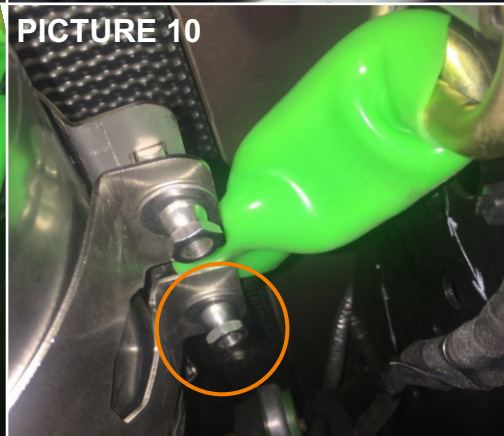
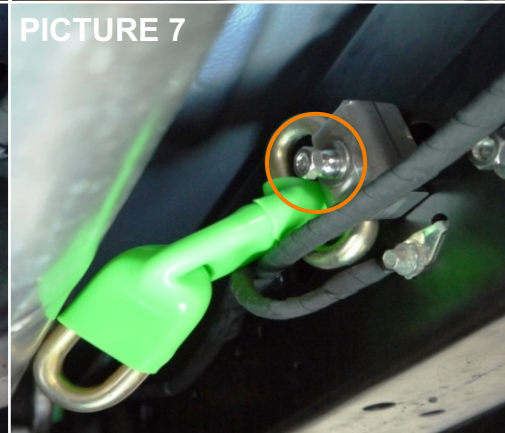
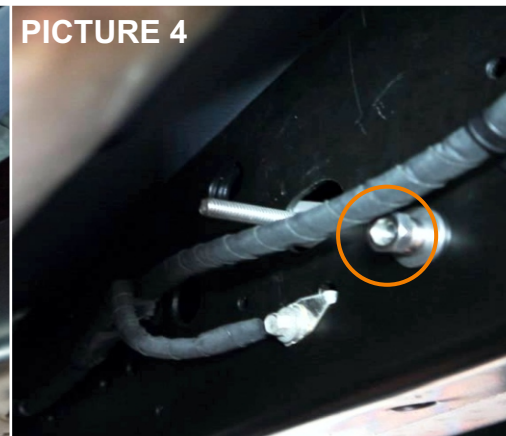
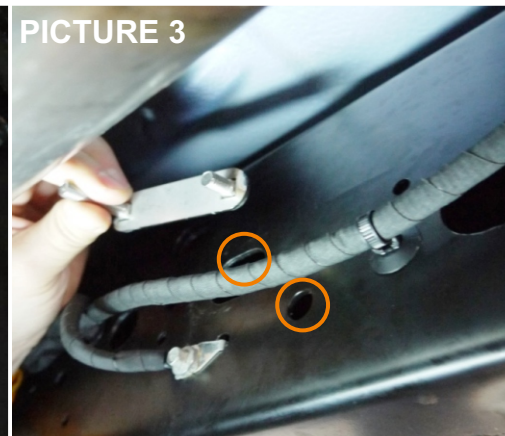
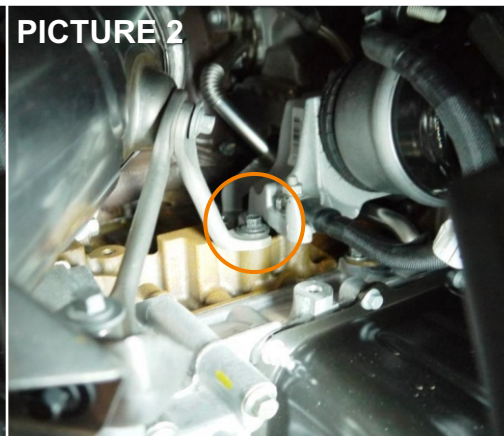
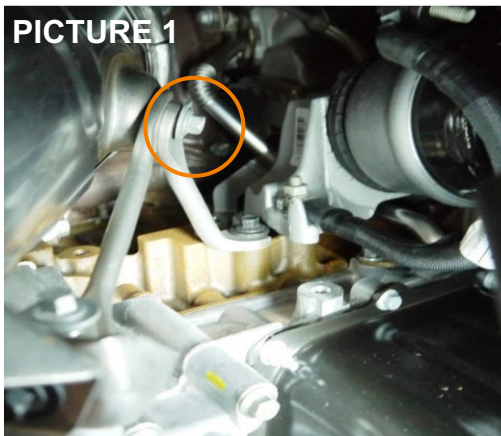


This product is supplied with the CATLOC ISR catalytic converter marking and registration system. This is an integral part of the complete anti-theft solution and must be applied as part of the installation process.

**FULL APPLICATION
INSTRUCTIONS INSIDE PACK**

Product Code:	1048	Vehicle:	FORD
Date of Creation:	08/11/19	Model(s):	RANGER MARK 6
Version:	1.2	Engine(s):	2.2L & 3.2L EURO 6
Page:	2/5	Drivetrain:	N/A

CATLOC®
Installation Instructions



Product Code: **1048**
 Date of Creation: **08/11/19**
 Version: **1.2**
 Page: **3/5**

Vehicle: **FORD**
 Model(s): **RANGER**
 Engine(s): **2.2L & 3.2L EURO 6**
 Drivetrain: **N/A**

This CATLOC® product is a permanent installation on your vehicle.

Read all instructions carefully prior to installation.

*** Permanent Fix Method:** To ensure maximum security, this product is supplied with security shear nuts and bolts. To prevent easy removal of this product, all nuts and bolts must be tightened until the nut head breaks off. This should only be done when instructed and once all final checks have taken place.

PLEASE SEE PAGE 2 FOR INSTALLATION PICTURES.

STEP 1 - Locate, Remove and Discard Factory Bolt

Locate, remove and discard the Factory bolts on the forward catalytic converter when looking up into engine bay. Fit 20mm Security Shear Bolt and washer supplied. **PICTURE 1 & 2**

STEP 2 - Locating 2 Bolt Bracket

Looking towards the front of the vehicle and on the offside of the rear catalytic converter. Locate two holes in chassis. Insert 2 bolt bracket (short bolt first through large hole) **PICTURE 3**

The small bolt thread should locate through the smaller hole in chassis as shown. Fit washer and security shear nut to thread. **PICTURE 4**

STEP 3 - Fitting Chain Bracket and Securing to Chassis

Fit chain end bracket to twisted end of 3 link chain. **PICTURE 5**

Locate chain bracket over long thread of bracket on chassis as shown. **PICTURE 6**

Fit washer and security shear nut. **PICTURE 7**

STEP 4 - Establish Clamp Setting

The clamp should be set approximately 15 - 18mm smaller than the circumference measurement. With the large plate inside the small plate, locate the nearest holes to the desired product setting. Insert two M8x16mm coach bolts from the centre of the product facing out. Fit washers and security nuts. Test Fitment. If incorrect repeat these steps until fitment is confirmed. **PICTURE 8**

STEP 5 - Locating the Clamp

Locate the Clamp around the Catalytic converter and position flange towards the chain. Insert M8x30mm coach bolt through the rear hole in the flange. Close clamp and loosely secure with Washer and Security shear nut. **PICTURE 9**

STEP 6 - Securing the Chain

Bring the chain down and position between the flange. Insert M8x30mm coach bolt through flange fixing hole, ensuring it passes through chain link, and secure with washer and shear nut. **PICTURE 10**

STEP 7 - Clamp Positioning

Position clamp so that the chain allows a small amount of play for exhaust system to move naturally.

Check Fitment of all components. **PICTURE 11**

FINAL CHECK and *PERMANENT FIX METHOD

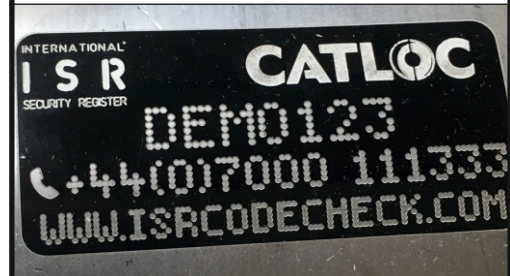
Check that all of the components are correctly installed to the vehicle as per instructed.

Once confirmed, use ***Permanent Fix Method** on all nut and bolt fixings.

Example of both a security nut and bolt fixing after the ***Permanent Fix Method** has been carried out.



IMPORTANT

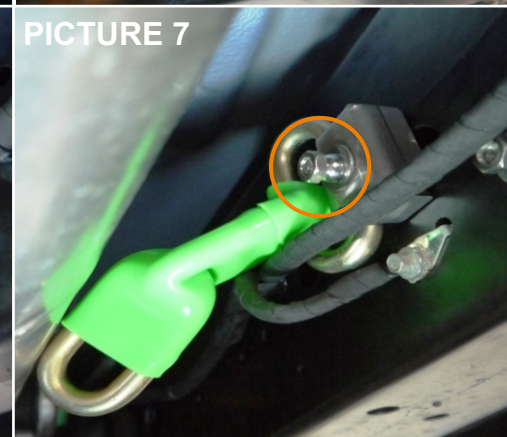
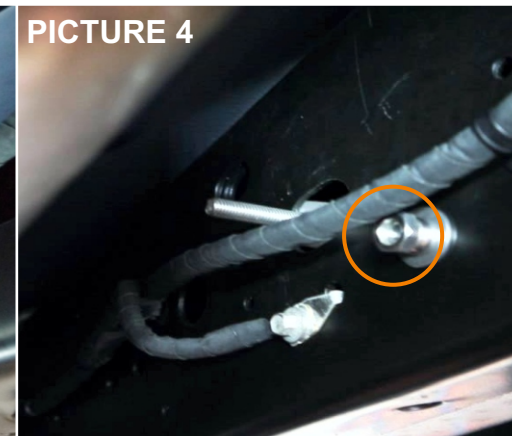
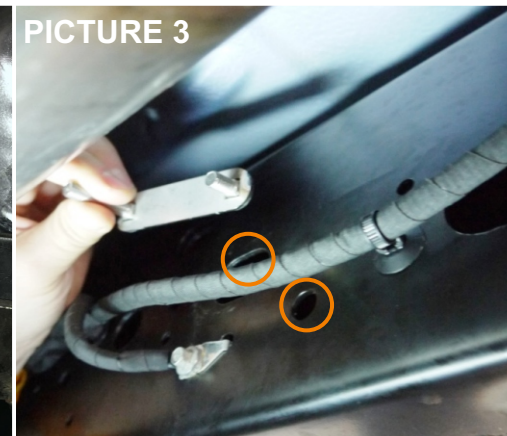
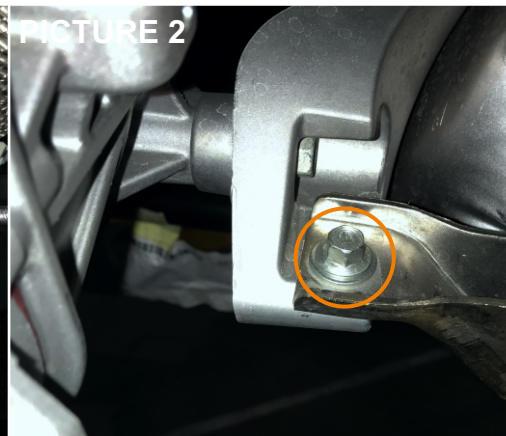
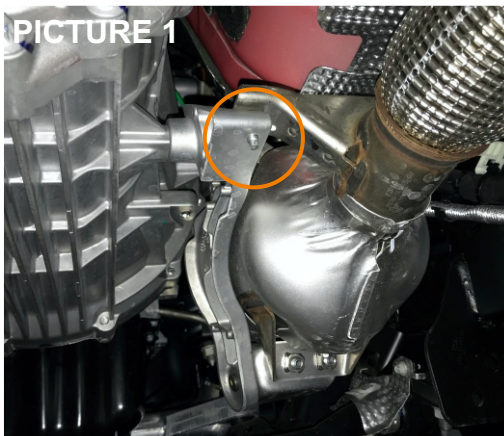


This product is supplied with the CATLOC ISR catalytic converter marking and registration system. This is an integral part of the complete anti-theft solution and must be applied as part of the installation process.

**FULL APPLICATION
INSTRUCTIONS INSIDE PACK**

Product Code:	1048	Vehicle:	FORD
Date of Creation:	08/11/19	Model(s):	RANGER MARK 7
Version:	1.2	Engine(s):	2.2L & 3.2L EURO 6
Page:	4/5	Drivetrain:	N/A

CATLOC®
Installation Instructions



Product Code: 1048
 Date of Creation: 08/11/19
 Version: 1.2
 Page: 5/5

Vehicle: FORD
 Model(s): RANGER MARK 7
 Engine(s): 2.2L & 3.2L EURO 6
 Drivetrain: N/A

CATLOC[®]
 Installation Instructions